



# JOE SANFELIPPO

STATE REPRESENTATIVE • 15<sup>th</sup> ASSEMBLY DISTRICT

(608) 266-0620  
FAX: (608) 282-3615  
Toll-Free: (888) 534-0015  
Rep.Sanfelippo@legis.wi.gov

P.O. Box 8953  
Madison, WI 53708-8953

May 22, 2017

## Rep. Sanfelippo public testimony on the Assembly Bill 261

Chairman Ripp and committee members, thank you for holding a public hearing on Assembly Bill 261 relating to the Milwaukee County high-wide route.

The Port of Milwaukee is an important asset to the state of Wisconsin because it strengthens the overall economic and social climate of the state by stimulating trade, business and employment.

In the 1970s, manufacturers, municipalities and utility companies reached an arrangement establishing a high and wide freight route to the Port of Milwaukee. That arrangement was never formalized.

Over the years, challenges along the route to the Port of Milwaukee have arisen due to changes in infrastructure including the installation of roundabouts, low-hanging wires, traffic signal poles and islands.

Assembly Bill 261 would codify the route in statute, and allow for freight movements of up to 23 feet high and 28 feet wide. Utility relocation and municipal coordination are key to preserving this integral freight corridor, and the bill amends state statute to assist in this effort.

I've also introduced an amendment that clarifies the starting point of the route, removes all provisions in the bill related to permitting for operating along the route, and gives more time to remove a conflicting obstruction along the route after a municipality receives notification about the obstruction. (*8 days from 5 days*)

The bill will help to maintain this crucial infrastructure link for Wisconsin businesses and workers who depend on large "over-size/over-weight" goods making their way to the Port of Milwaukee.

I ask you that support Assembly Bill 261.

Thank you again for listening to my testimony on AB 261. I'm happy to answer any questions you may have.

A handwritten signature in black ink, appearing to read "Joe Sanfelippo". The signature is written in a cursive, flowing style.



# DAVID CRAIG

STATE SENATOR

Assembly Committee on Transportation  
Public Hearing, May 23, 2017  
Assembly Bill 261  
Senator David Craig, 28<sup>th</sup> Senate District

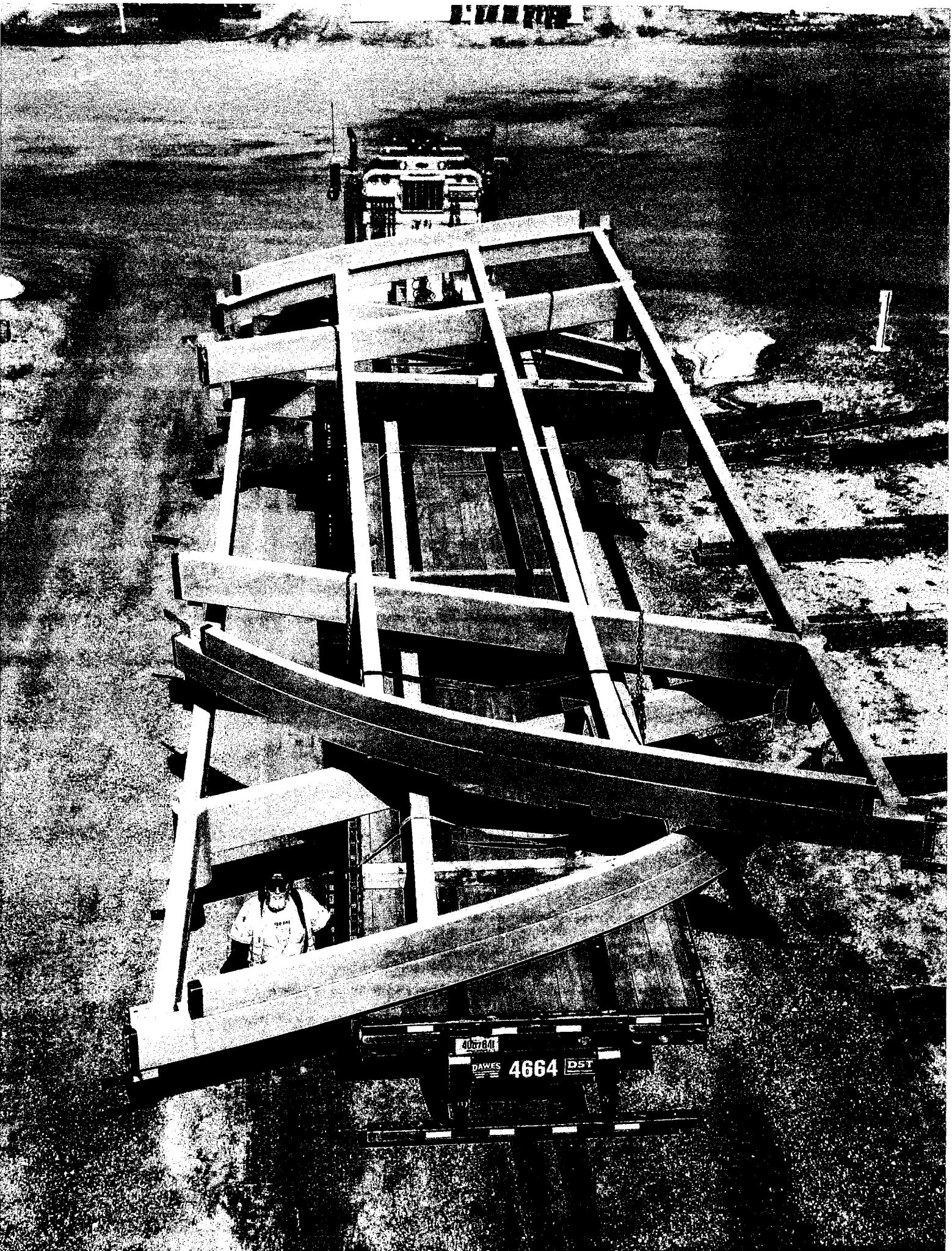
Dear Chairman Ripp and Committee Members,

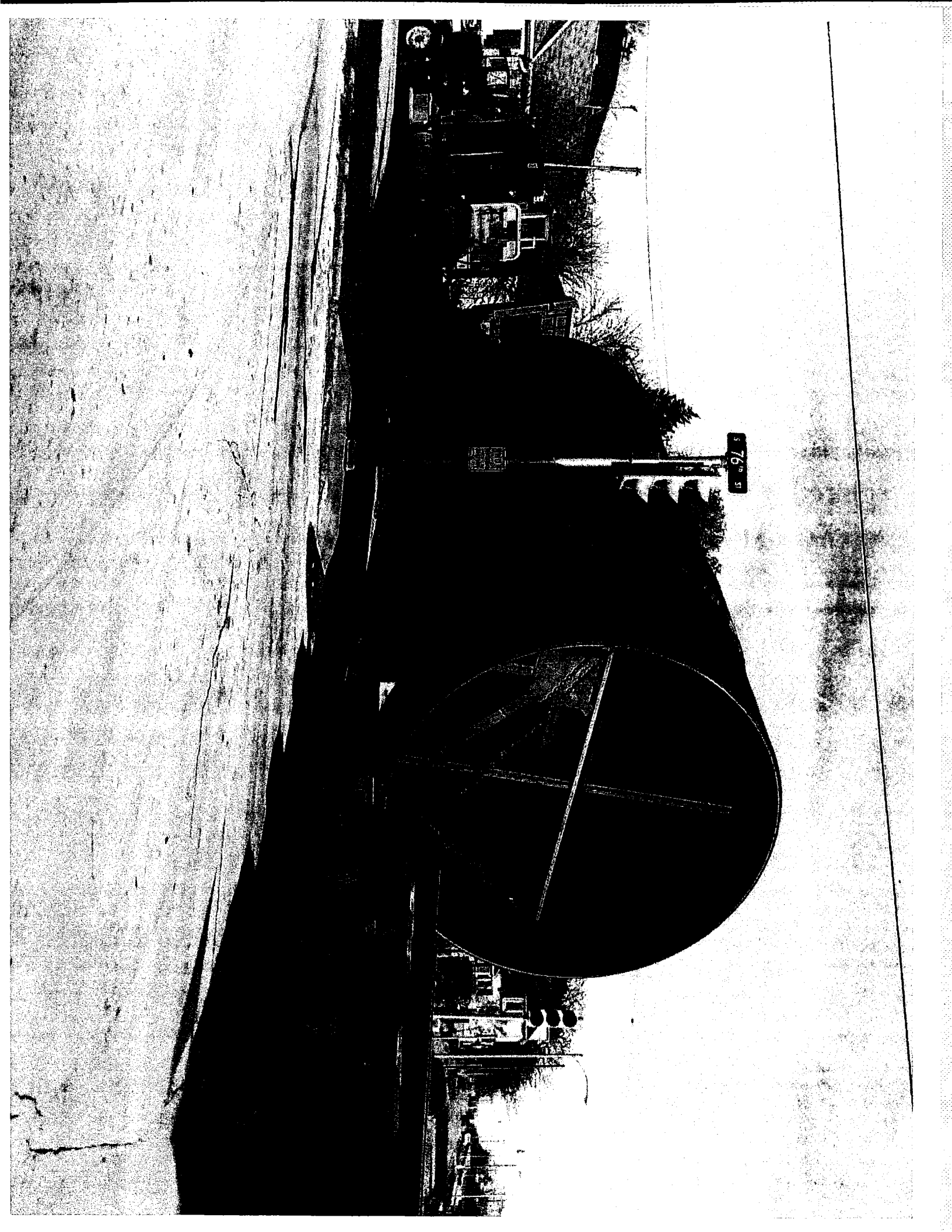
Thank you for taking testimony on Assembly 261 regarding changes to the Milwaukee County high-wide route.

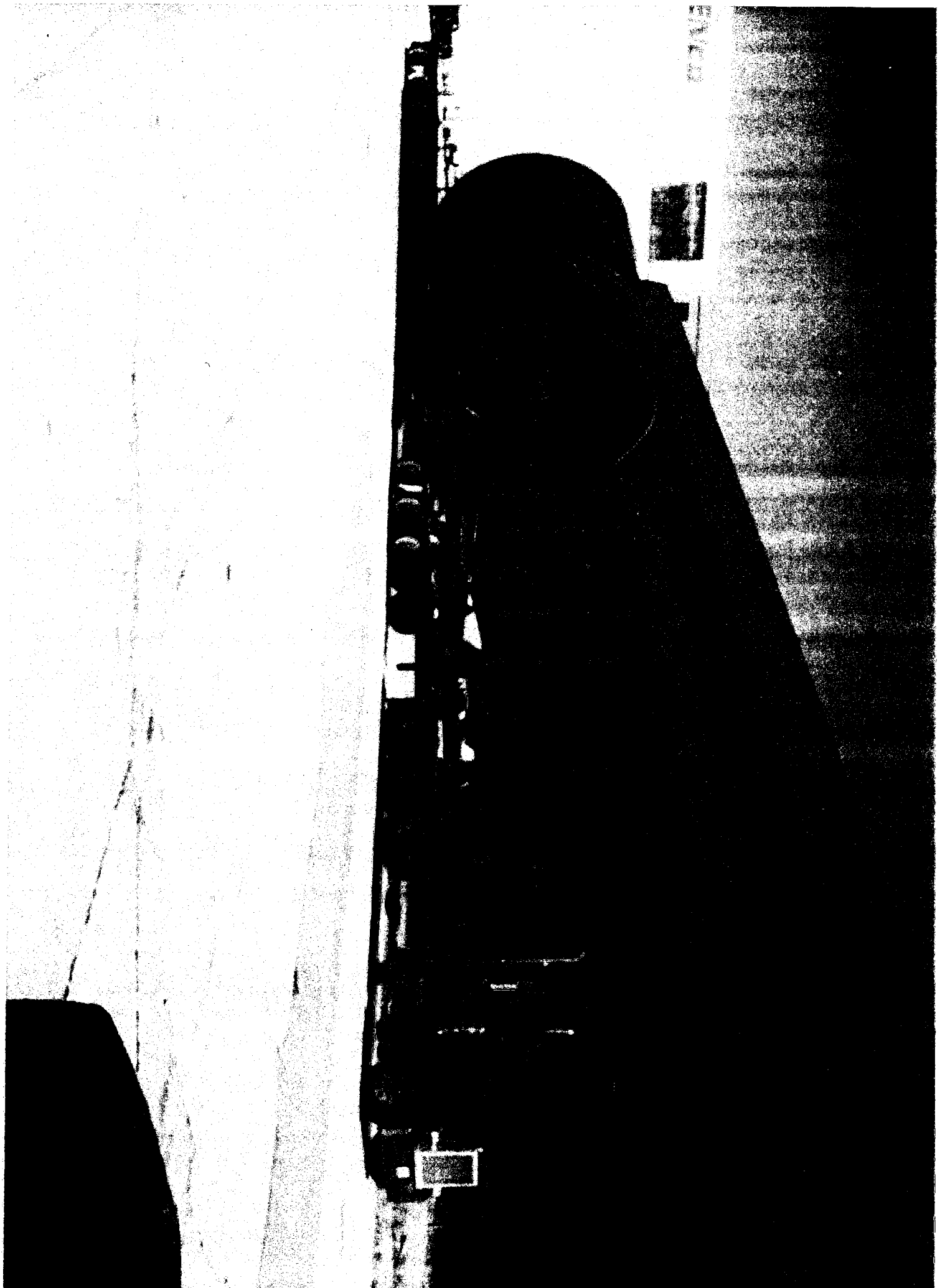
A high-wide route is a designated route for large commercial vehicles to travel through the city to the Port of Milwaukee. We have introduced this legislation because the route established in the 1970s is vastly different today. The route today contains low-hanging wires, roundabouts, traffic signal poles and islands that may need to be adjusted. The legislation will codify the route in statute and allow for freight movements that are no more than 28 feet wide or 23 feet tall to travel to the Port of Milwaukee.

The Port of Milwaukee is an integral part of Milwaukee and the state's economy. From delivering 1.4 million tons of salt each year to delivering the roof trusses for the new Milwaukee Bucks arena, the Port of Milwaukee is essential to economic development.

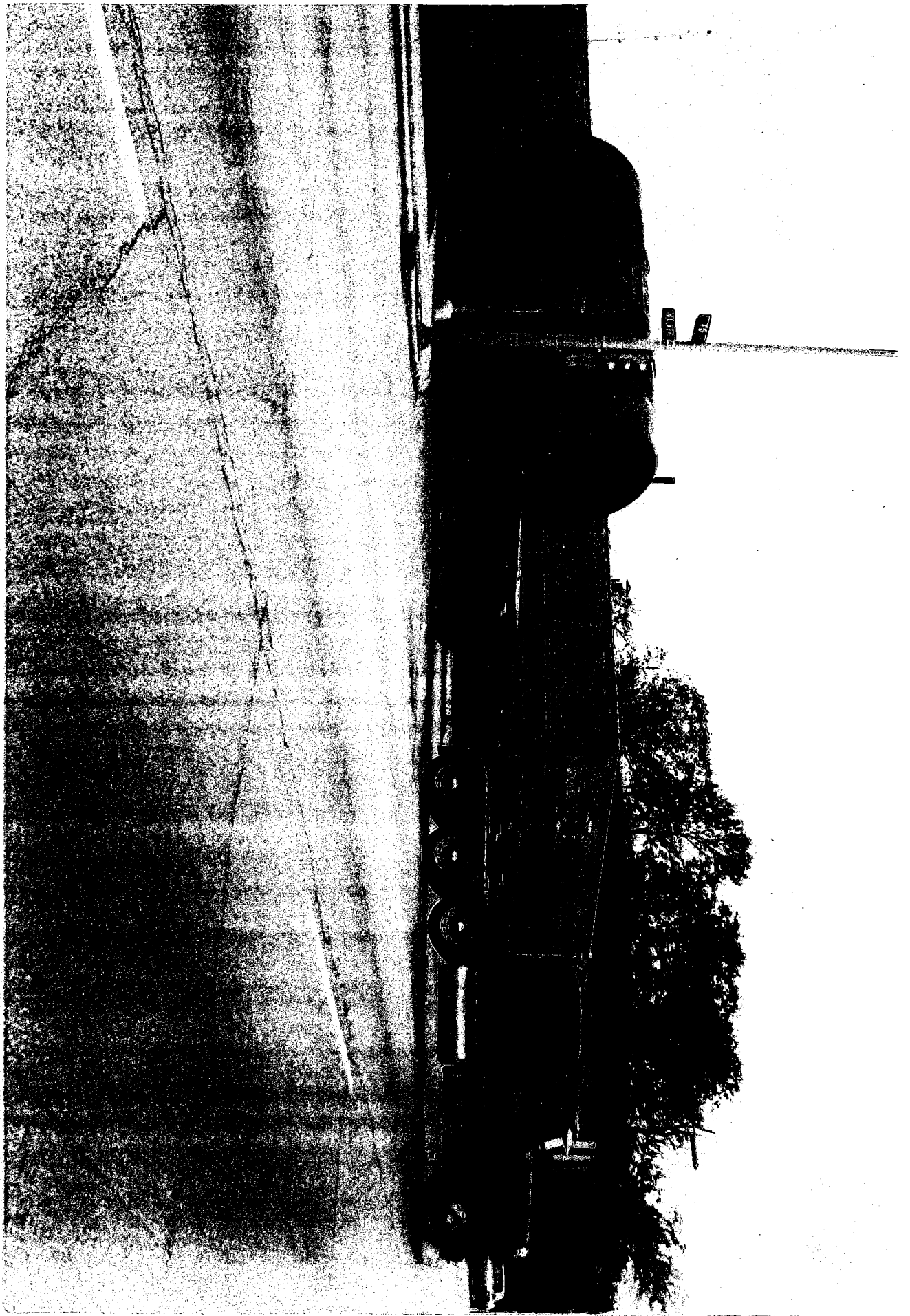
With this in mind, it is vital that goods can make their way to the port without obstacles and in an efficient manner. The legislation states that no person may take any action that would make any portion of the route permanently unavailable for use by a high-wide load. Thank you for allowing me to testify on this commonsense update of our statutes. I am happy to take any questions from committee members.

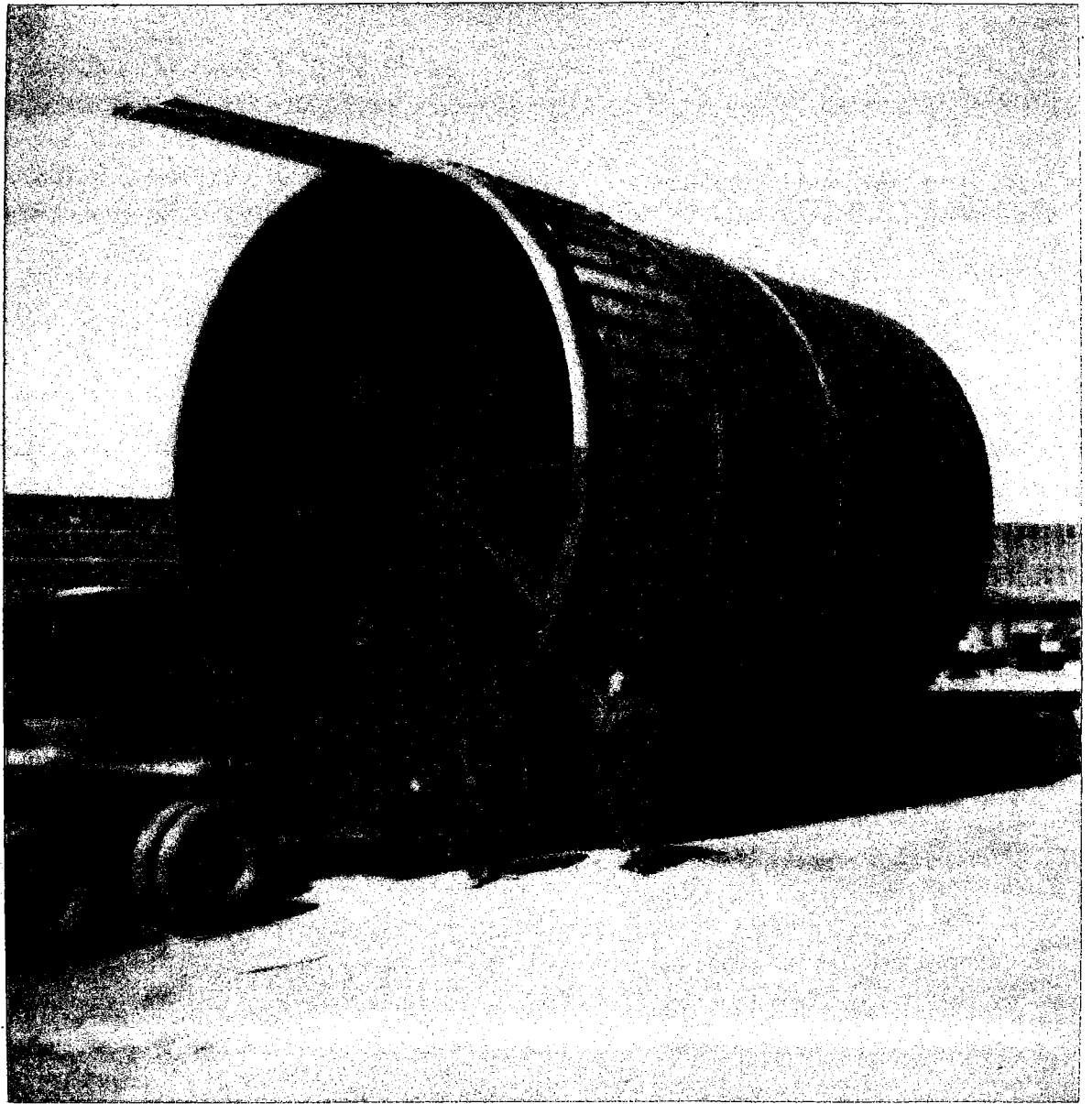




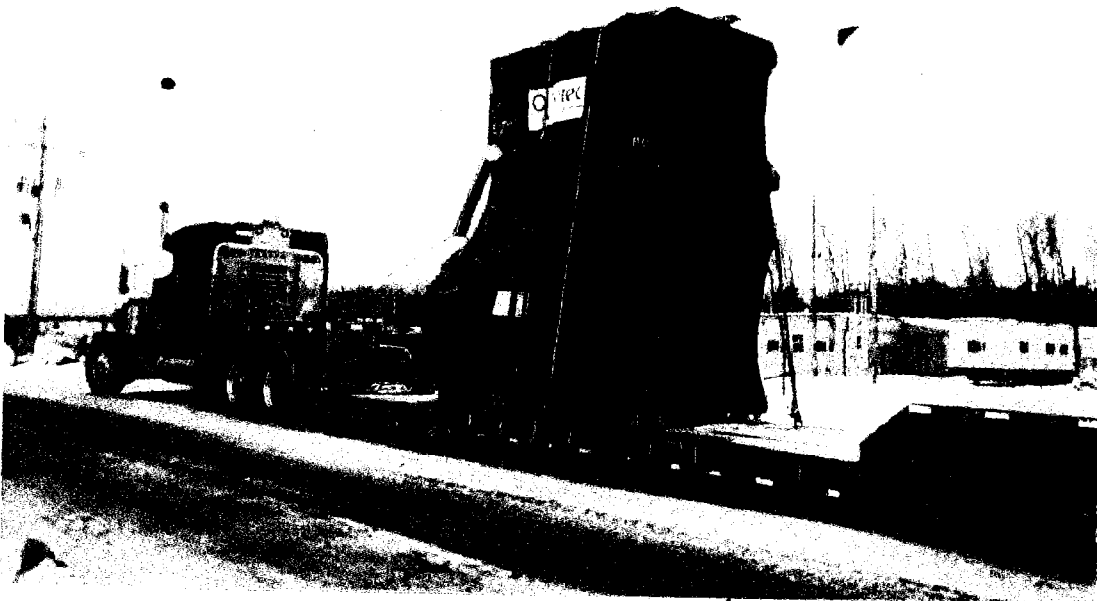
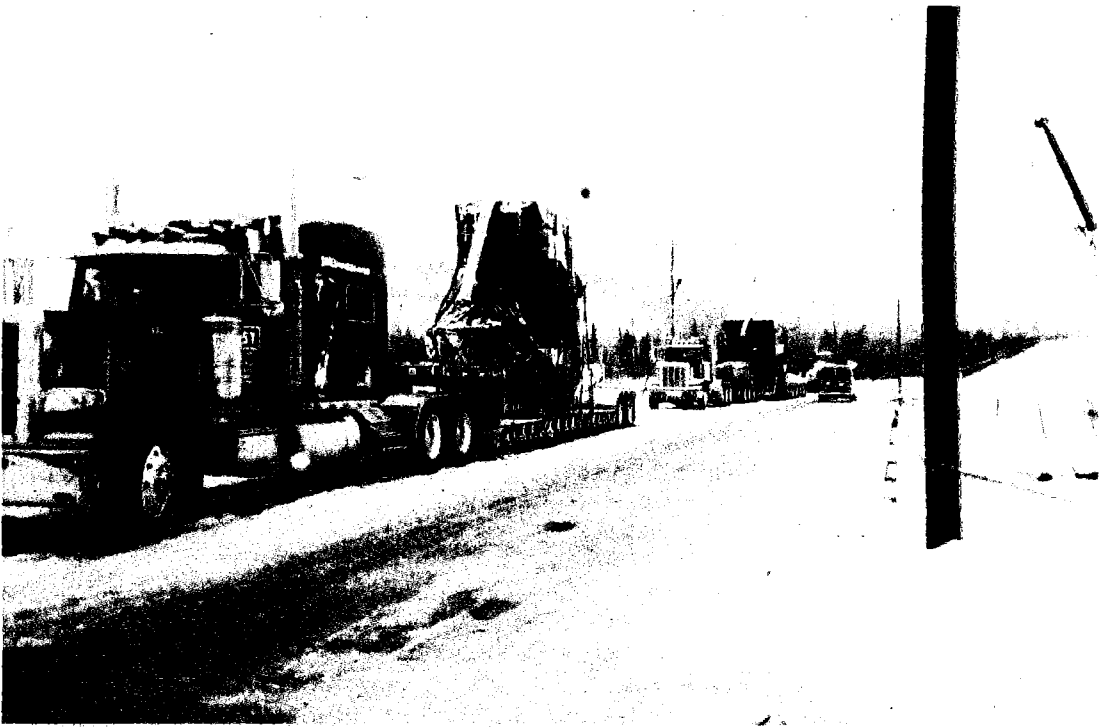


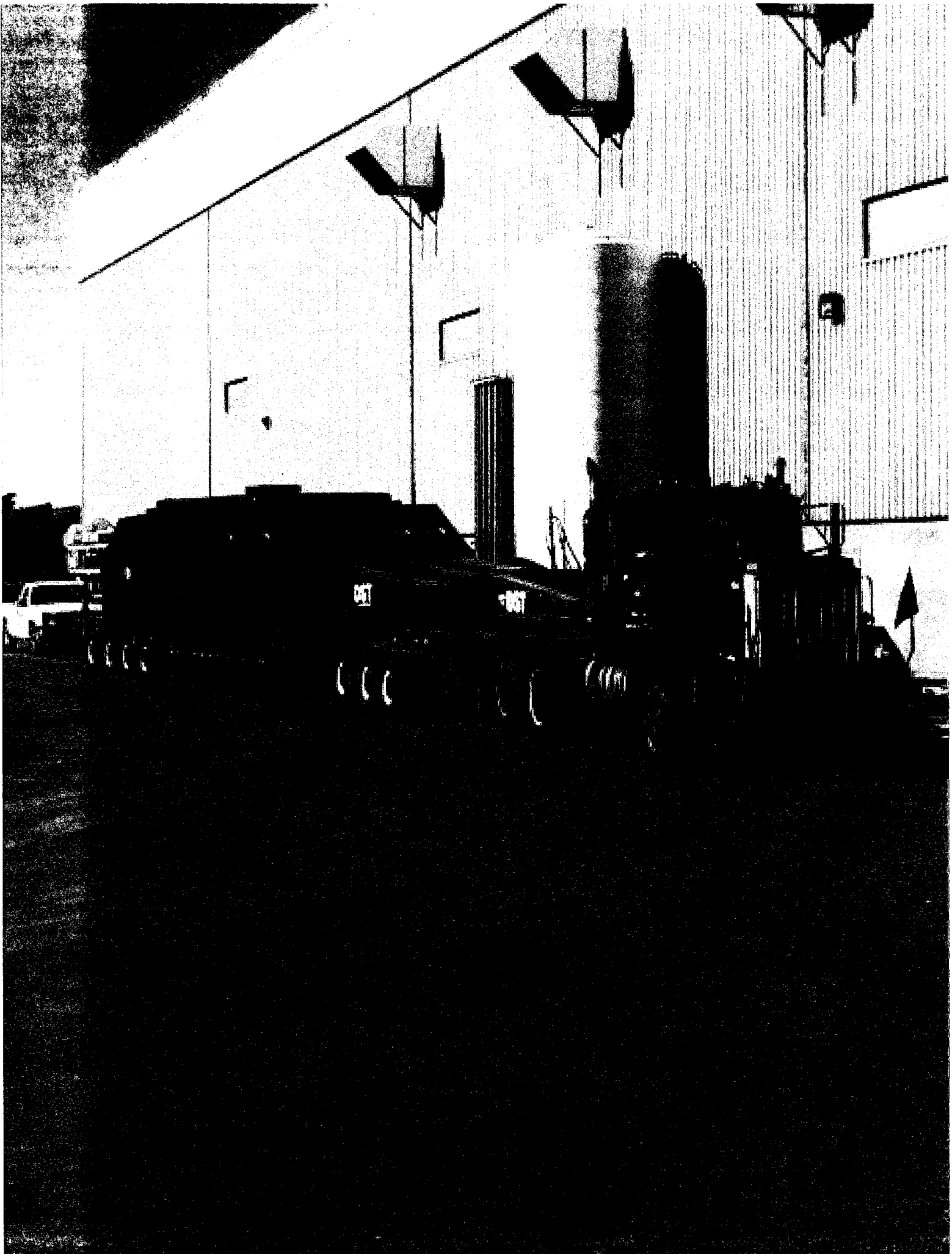


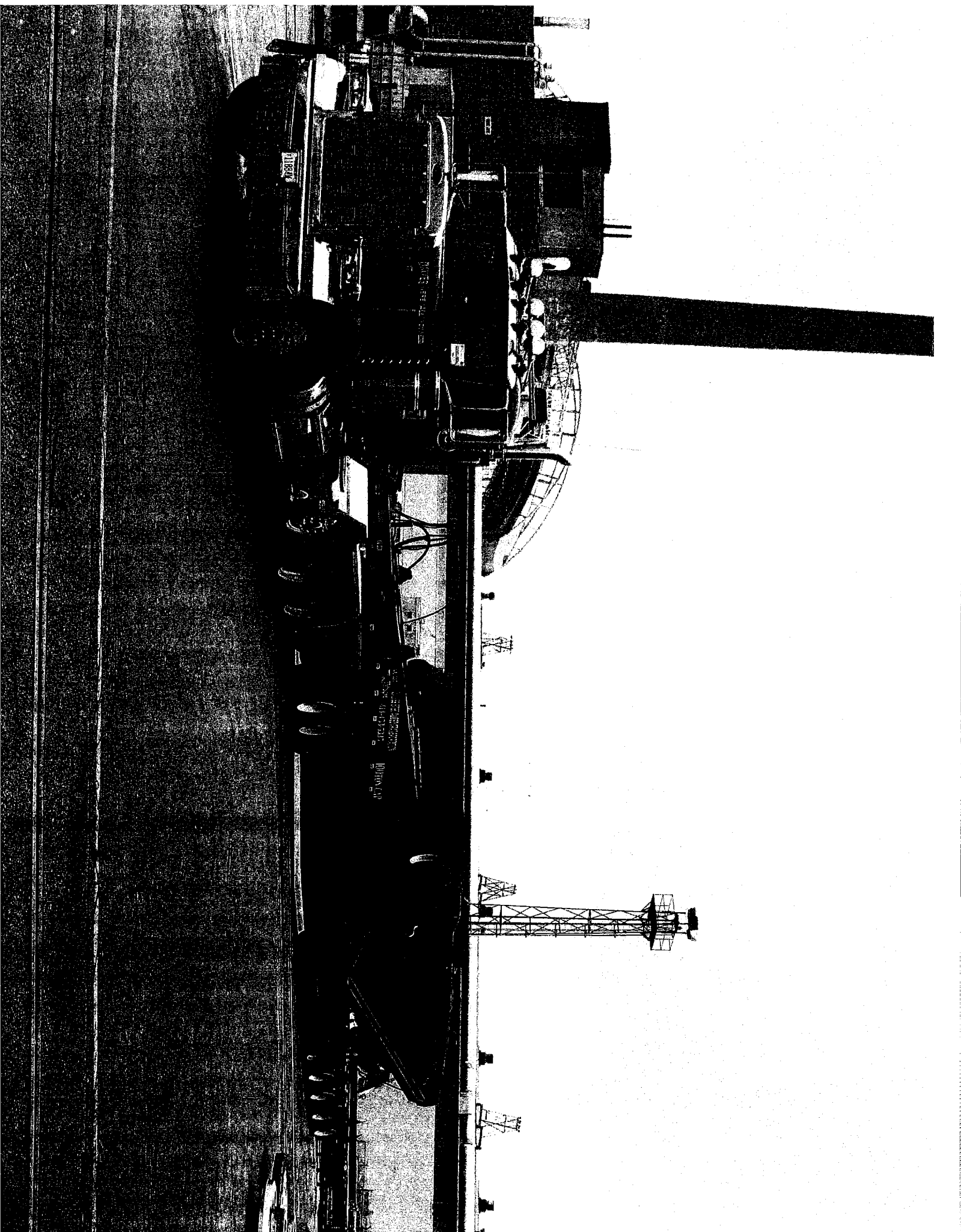














# WMC

WISCONSIN MANUFACTURERS & COMMERCE

**TO: Members of the Assembly Committee on Transportation**

**FROM: Jason Culotta**  
**Senior Director of Government Relations**

**DATE: May 23, 2017**

**RE: Support for Assembly Bill 261**

---

Thank you for the opportunity to share comments with you today in support of Assembly Bill 261, legislation to permanently preserve a "high/wide corridor" from the manufacturing base of large dimensional products in West Allis to the Port of Milwaukee.

Wisconsin Manufacturers & Commerce (WMC) is the state chamber of commerce and largest general business association in Wisconsin. We were founded more than 100 years ago, and are proud to represent approximately 3,800 member companies of all sizes, and from every sector of our economy. Our mission is to make Wisconsin the most competitive state in the nation in which to do business.

In the early 1970s, Allis-Chalmers concluded a gentlemen's agreement between the City of Milwaukee, the City of West Allis, and Wisconsin Electric to provide a 28' high corridor from the manufacturing facility in West Allis to the Port of Milwaukee. Preserving this same corridor, with some amendments due to changes made over time, is the subject of this legislation. The bill calls for placing a 23' high corridor permanently in state statute to preserve the route from encroachment.

Low phone and cable lines, "streetscaping" projects, street medians and inflexible monotubes, and rail "quiet zones" that install new medians and low sign masts all contribute to limiting where "over-sized/over-weight" truck movements can go.

WisDOT and the Port of Milwaukee first began meeting on this subject in December 2013 and the Department has hosted a working group since. This legislation is an outgrowth of that process.

Assembly Bill 261 will ensure that the corridor currently used is preserved into the future.

WMC urges your support for Assembly Bill 261.