

 **05hr_SC-JCEDCA_ab0498_pt02a**



(FORM UPDATED: 08/11/2010)

**WISCONSIN STATE LEGISLATURE ...
PUBLIC HEARING - COMMITTEE RECORDS**

2005-06

(session year)

Senate

(Assembly, Senate or Joint)

**Committee on ... Job Creation, Economic
Development and Consumer Affairs (SC-JCEDCA)**

COMMITTEE NOTICES ...

- Committee Reports ... **CR**
- Executive Sessions ... **ES**
- Public Hearings ... **PH**

INFORMATION COLLECTED BY COMMITTEE FOR AND AGAINST PROPOSAL

- Appointments ... **Appt** (w/Record of Comm. Proceedings)
- Clearinghouse Rules ... **CRule** (w/Record of Comm. Proceedings)
- Hearing Records ... bills and resolutions (w/Record of Comm. Proceedings)
(**ab** = Assembly Bill) (**ar** = Assembly Resolution) (**ajr** = Assembly Joint Resolution)
(**sb** = Senate Bill) (**sr** = Senate Resolution) (**sjr** = Senate Joint Resolution)
- Miscellaneous ... **Misc**

* Contents organized for archiving by: Mike Barman (LRB) (August/2012)

AB 498?

Goodwill^{NCW}

Goodwill Industries of North Central Wisconsin, Inc.

Goodwill^{NCW}

Serving North Central Wisconsin Communities

Rick Sense

Director of Development

Goodwill Industries of North Central Wisconsin, Inc.

1800 Appleton Road, Menasha, WI 54952-3729

920-968-6378 or 920-731-6601

Fax: 920-731-3041 • Toll-free: 800-482-0030 • TDD: 920-731-6623

rsense_gw@gwicc.org • www.goodwillncw.org

OUR MISSION

Goodwill Industries of North Central Wisconsin, Inc.
will improve the community
by improving the lives of its people
through services, partnerships, collaborations
and the responsible use of community resources.

Goodwill

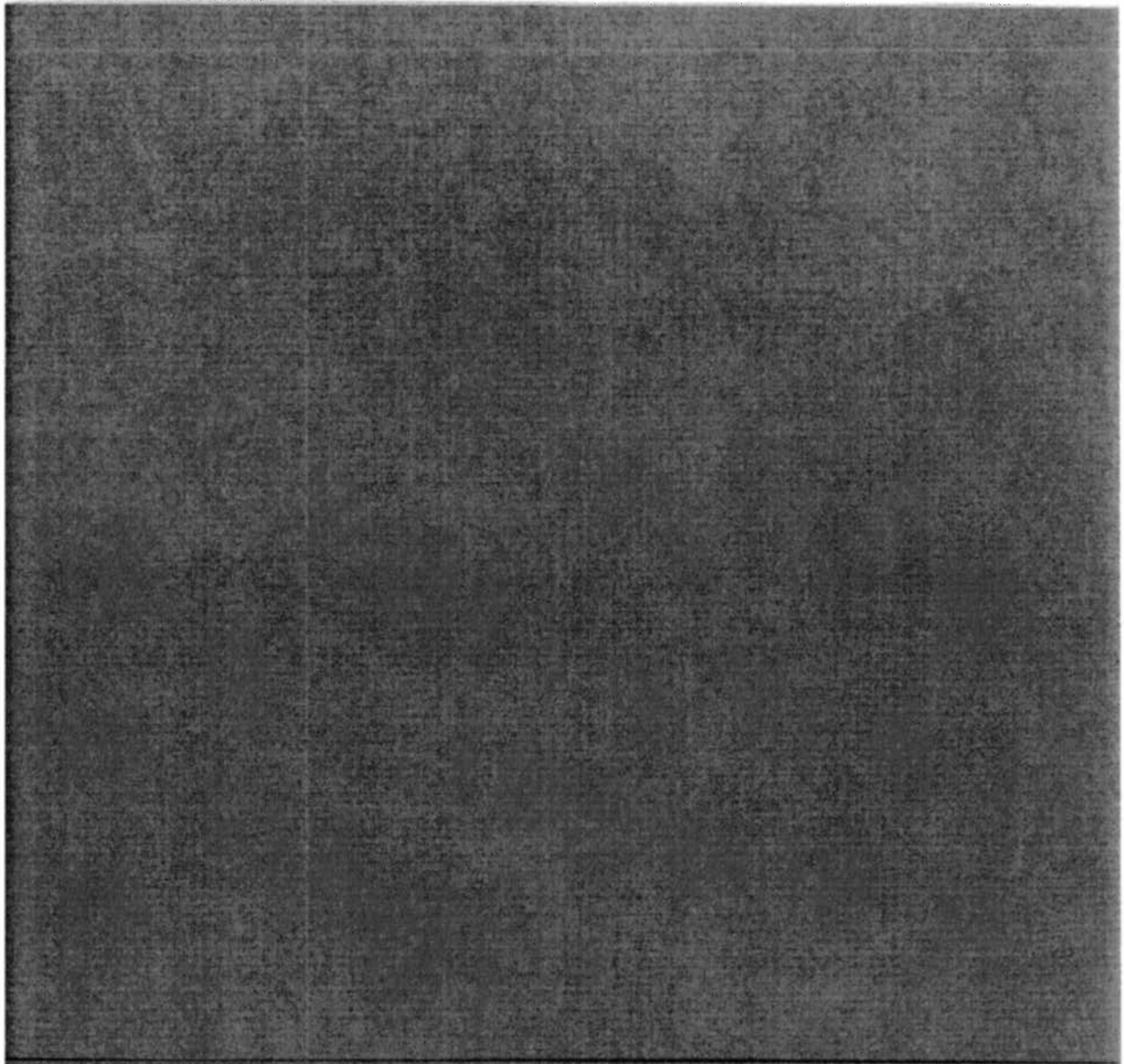
Goodwill Industries of North Central Wisconsin, Inc.

1800 Appleton Road, Menasha, WI 54952-3729

1-920-731-6601

www.goodwillncw.org

A 501(c)(3) not-for-profit human service organization



Chairperson Kanavas and members of the Senate Committee on Job Creation, Economic Development and Consumer Affairs, thank you for the opportunity to represent Goodwill Industries at this meeting. My name is Rick Sense and I am here to urge the Committee to support AB 498 which will clarify and codify Goodwill Industries status as a property tax exempt organization by adding Goodwill Industries to the statutory list of organizations exempt from property taxation in Wisconsin.

I work at Goodwill Industries of North Central Wisconsin. I am here today with my colleagues from the 3 Goodwill Industries organizations headquartered in Wisconsin. In addition to Goodwill NCW, which is headquartered in the Fox Cities and serves 35 counties stretching from Lake Michigan to the Mississippi, representatives are also here from Goodwill Industries of Southeastern Wisconsin headquartered in Milwaukee and Goodwill Industries of South Central Wisconsin, headquartered in Madison.

Collectively our 3 Goodwill organizations directly served more than 43,000 people last year. Nearly 3,000 individuals were placed in jobs with earnings near \$40,000,000. More than 2 million people donated goods to and more than 5 million people shopped at our 51 stores and training centers across all of Wisconsin. Additionally, we make payments in lieu of taxes annually to numerous municipalities throughout our State. Together, our three Goodwills employ more than 4,000 people and more than 3,000 people volunteered time at our organizations last year alone.

As you may know, all three of our Goodwill organizations operate as independent 501 (c)(3) organizations. As a nonprofit organization, Goodwill touches hundreds of thousands of lives in Wisconsin each year including persons in programs, persons referred to our stores for needed items, donors, customers, volunteers and employees. Our goal is to help people with disabilities and other barriers to independence become more fully contributing members of our diverse society. By improving lives, we improve Wisconsin's communities.

Since colonial days, America has promoted charitable activities as an alternative to government. Human service organizations, soup kitchens, museums and hospitals all relieve the government of the necessity of providing important public services such as welfare, healthcare and education. Property tax exemption is a critical benefit provided to institutions like Goodwill allowing us to marshal our resources to perform our specific mission. In essence, organizations like Goodwill often provide the only supplement-and indeed in many cases-the only complement and alternative to government. In most cases these services are provided at lower cost and greater efficiency than what government is able to provide.

Our mission at Goodwill Industries of North Central Wisconsin is to improve the community by improving the lives of its people through services, partnerships, collaborations and the responsible use of community resources. We do that in many

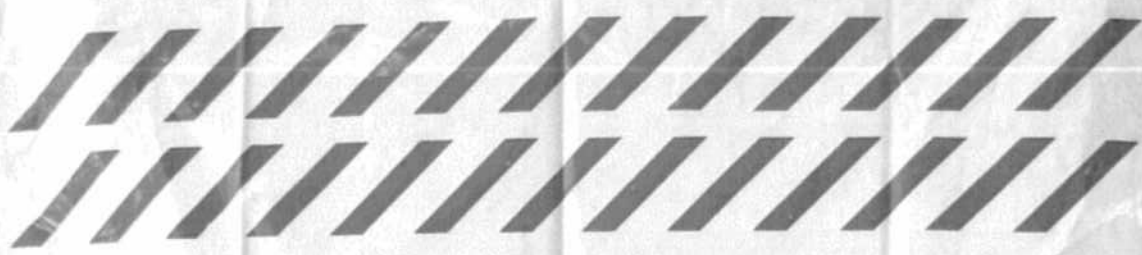
unique and different ways-from providing Birth-to-Three in home services, stepping in to meet the needs of families all over Wisconsin with children impacted by Autism, creating a community center that provides health care and educational services to more than 150,000 Wisconsinites each year and by providing alternatives to payday lending through GoodMoney and FISC-Consumer Credit Counseling Service- Goodwill NCW is meeting peoples' needs and improving communities.

Additionally, Goodwill NCW improves the community by "recycling" everything it receives, thus keeping it out of Wisconsin landfills. Our first priority is to convert our donated items into revenue by "recycling" these items to people looking to make the most of their discretionary income. Items that don't sell in our stores are "recycled" in bulk to salvage dealers. The "keep it out of the landfill" program at Goodwill Industries of North Central Wisconsin exceeds two million pounds each year. We are a unique organization because we help people and the environment at the same time.

Last year, Goodwill's property tax-exempt status was unsuccessfully challenged by a Wisconsin municipality and unfortunately, we expect challenges from other municipalities in the future. Because of this, we have partnered with the other Goodwill organizations throughout Wisconsin in an effort to remedy this situation. Adding Goodwill Industries to the list of organizations that are statutorily exempt from property taxation under Wisconsin Statutes 70.11(12) (a), will clarify the situation and eliminate the need of all Wisconsin's Goodwills to address this possible challenge from other municipalities in Wisconsin.

Finally, donors contribute to Goodwill with the expectation that their donations will be used to further Goodwill's charitable mission. They do not donate to pay taxes. A property tax on Goodwill and other charities diminishes the value of donors' charitable contributions. Additionally, any taxation of Goodwill property will drain resources from Goodwill programs and services and transfer them to government at a time when charities are being asked to do more with less.

Thank you again Chairperson Kanavas for the opportunity to address you and the other members of your committee about this issue.



DO it!

THE POST-CRESCENT

www.postcrescent.com

SACK IT TO
Goodwill

**WORKING TOGETHER
NEVER FELT SO GOOD!**

Help Goodwill improve the community by improving the lives of its people through partnerships, collaborations and the responsible use of community resources.

Thank you for taking time to fill this bag with:

- Clothing
- Other textiles

Please put the following types of items in a box:

- Glassware
- Shoes
- Books
- Kitchen
- Household

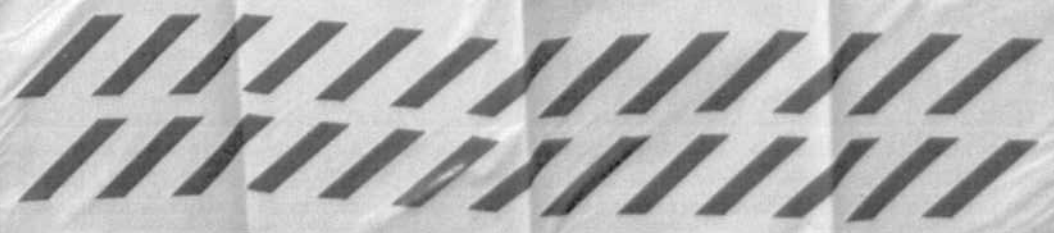
Your donations are tax deductible!
Goodwill is a 501(c)(3) organization

**VOLUNTEERS WILL PICK UP
SATURDAY, MARCH 12TH
AFTER 9 A.M. IN THE FOX CITIES**

Donations can also be dropped off at your convenience at these locations:

- | | | |
|----------------------------|------------------------|---|
| Green Bay | Grand Chute
Menasha | 4750 Michael Drive
1800 Appletus Road |
| St. Vincent de Paul | Appleton
Neenah | 1924 W. College Ave.
384 S. Commercial St. |

Warning: This is not a fire. To avoid danger of suffocation, keep plastic away from babies and young children. Do not use in cribs, beds, carriages or playpens.



DELIVERING ON THE GOODWILL PROMISE

COMMUNITY SHAREHOLDER HIGHLIGHTS - 2004

GOODWILL INDUSTRIES OF NORTH CENTRAL WISCONSIN, INC.



DONATIONS

652,589 (UP 8.5% FROM LAST YEAR)

26,103,560 POUNDS - THAT'S MORE THAN 13,051 TONS!

JOBS IN STORES

1,193 TEAM MEMBERS RECEIVED PAYCHECKS

2,167 PROGRAM PARTICIPANTS RECEIVED IN-STORE TRAINING

SHOPPING

1,915,181 CUSTOMER TRANSACTIONS (UP 9%)

20,542 PEOPLE (UP 52%) RECEIVED GOODWILL VOUCHERS FOR SHOPPING IN OUR STORES, TOTALING \$497,580 OF FREE MERCHANDISE

LIVES TOUCHED

31,029 PEOPLE (UP 38%) ACROSS NORTH CENTRAL WISCONSIN IMPROVED THEIR LIVES THROUGH GOODWILL PROGRAMS AND SERVICES, INCLUDING:



SHERRI THUNDER

The American Indian Center (formerly Intertribal Community Center) and GED/HSED Program have helped Sherri overcome difficulties, work toward her diploma and look forward to continuing her education.



ADAM HURST

The Vocational Support Services Program has helped Adam improve his behaviors, develop better relationships with his roommates, and become a contributing team member in the Menasha store.



RUDY GALLEGOS

Harmony Café helped Rudy complete his community service responsibilities, meet positive role models, become a volunteer and set a goal to find a job through which he can help others.



ELLA HAMEISTER

Early Intervention Services helped Ella's family deal with her rare chromosomal disorder. Weekly therapy and special education services have helped her "graduate" to her local school's early childhood program.

**LIVES TOUCHED THROUGH ON-CAMPUS
GOODWILL NCW PROGRAMS AND SERVICES**

ACTION Training for Employment	163
American Indian Center (formerly Intertribal Center)	386
Beyond Boundaries of Autism	89
Changing Tomorrows	30
Children First	61
Community Garden Partnership	223
Early Intervention Services (EIS)	203
Employers' Resource/Job Placement	72
Financial Information & Service Center (FISC)	4,340
Harmony Café	1,174
Helping Hands in the Home	26
High School Equivalency/GED Program	173
School-to-Work	54
Technology Training Program	19
Transitional Support Program	43
Vocational Evaluation	62
Vocational Support Services (VSS)	139
Wisconsin Works (W-2) Programs	
Community Service Jobs	85
Food Stamp Employment and Training Program	439
Life Skills Classroom	135
Job Development Program	141
Work Adjustment Training	76
Work Services	85
Workforce Investment Act Case Management	102

SUB-TOTAL 8,320

Goodwill NCW programs and services directly served 31,029 people in 2004 (up 38%).

**GOODWILL NCW
FINANCIAL RESULTS - 2004**

Goodwill revenue

Store sales and salvage revenue	23,649,225
Program contracts	4,291,833
Other revenue	1,228,213
Public support (time, money and material donations)	779,270
Industrial contracts	140,448

TOTAL \$30,088,989

**LIVES TOUCHED THROUGH
RETAIL STORES/TRAINING CENTERS**

	Retail store program participants	People in need receiving free merchandise
Ashwaubenon	168	1,278
Eau Claire	217	3,042
Grand Chute	111	627
Green Bay East	135	2,314
La Crosse	255	527
Manitowoc	79	768
Marshfield	59	101
Menasha	228	1,644
Menomonie	40	408
Oshkosh	51	624
Rhineland	138	2,902
Rice Lake	62	1,382
Shawano	34	1,476
Stevens Point	235	733
Tomah	116	351
Weston/Rothschild	30	2,088
Wisconsin Rapids	75	277
Shiner Distribution Center	134	

SUB-TOTALS 2,167 20,542



Goodwill expenses

Wages and benefits	\$18,121,764
Cost of new goods	3,036,529
Occupancy	2,887,911
Supplies	1,838,344
Depreciation	1,243,492
Transportation and logistics	981,486
Administrative expenses	671,781
Merchandise vouchers for people in need	497,580
Advertising/publications	431,313

TOTAL \$29,710,200

FOR OUR COMPLETE 2004
COMMUNITY SHAREHOLDER REPORT,
GO TO WWW.GOODWILLNCW.ORG

Goodwill ^{NCW}
Serving North Central Wisconsin Communities

improving lives and
our communities.



Improving lives and helping our communities. That's what Goodwill is all about.

If you count up all of our program participants, those who received discount vouchers, those who donated to Goodwill, and those who shopped in our stores, your Goodwill touched thousands of lives across north central Wisconsin in 2004.

That underscores the essence of The Goodwill NCW Promise: when you donate to Goodwill and shop in our stores, together we improve individual lives and, ultimately, our communities.



Thank you for helping us keep that promise during 2004. We trust you will continue to be partners with us in this very important work.

Robert A. Pedersen
President & CEO
Goodwill Industries of North Central Wisconsin, Inc.

Goodwill stores/training centers

Goodwill NCW operates 18 retail stores/training centers serving these communities:

Ashwaubenon	Manitowoc	Rice Lake
Darboy	Marshfield	Shawano
Fau Chere	Menasha	Stevens Point
Grand Chute	Menomonee	Tomah
Green Bay East	Oshkosh	Wausau/Weston
La Crosse	Rhineland	Wisconsin Rapids

Our stores are open from 9 a.m. to 9 p.m. weekdays, from 9 a.m. to 7 p.m. Saturdays, and from 10 a.m. to 6 p.m. on Sundays. Call for special holiday hours.

Goodwill Industries of North Central Wisconsin

Goodwill Industries of North Central Wisconsin is one of 207 regional Goodwill organizations throughout North America and across the world. A member of Goodwill Industries International and Rehabilitation For Wisconsin, it has been serving north central Wisconsin communities since 1971.

Goodwill NCW currently serves 35 counties and includes 18 Goodwill stores/training centers from Manitowoc to La Crosse, and as far north as Rice Lake and Rhineland. A 501(c)(3) human services organization, it is based at the Goodwill Community Center in Menasha.

For our complete 2004 Community
Shareholder Report, go to
www.goodwillncw.org.

Goodwill^{NCW}

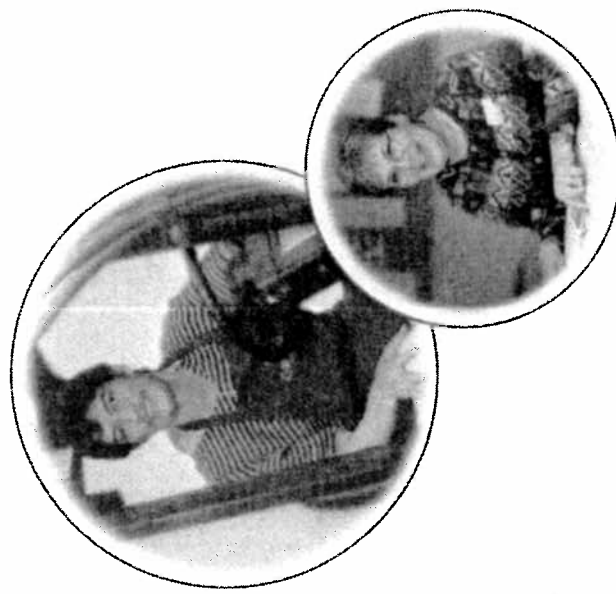
Serving North Central Wisconsin Communities

Goodwill Industries of North Central Wisconsin, Inc.
1800 Appleton Road
Menasha, WI 54952
800-482-0030
TDD: 920-731-6623
www.goodwillncw.org

Goodwill NCW is accredited by CARF for Employment Services, Comprehensive Vocational Evaluation, Employee Development Services, Organizational Employment Services, and Community Employment Services.



Keeping The Goodwill Promise across North Central Wisconsin



Community Report

Goodwill^{NCW}

Serving North Central Wisconsin Communities

Our promise to you

People often ask "What exactly does Goodwill do?" We can best answer that with this promise:



In a nutshell, if you donate to us and buy in our stores, we promise to create programs and services that enrich individual lives, and ultimately, our communities.

We continued to do that across north central Wisconsin in 2004.

Donating



Our promise is a partnership. The lifeblood of that promise is that people - you, for example - donate the gently used clothing, books, housewares, jewelry, tools, furniture, toys, etc. they no longer need. And residents of north central Wisconsin responded in 2004:

You brought 652,589 donations totaling 26,103,560 pounds - that's more than 13,051 tons - of quality merchandise to our donation doors at our stores/training centers. Sales of these goods generated funds to help people, and prevented tons of materials from ending up in landfills. Thanks!

Jobs in stores



It takes a lot of people in each of our stores to sort donated goods, determine what goes on the sales floor when, price the merchandise, and keep racks and shelves well-stocked. These jobs can serve as valuable training opportunities for those with disabilities and other barriers to employment, and put dollars into local communities.

In north central Wisconsin in 2004:

- ♦ 1,193 team members received paychecks from our stores/training centers.
- ♦ 2,167 people received vocational training in our stores.

Shopping



People from all walks of life know Goodwill stores/training centers as trusted sources of quality merchandise at moderate prices. All of our stores feature a mix of new merchandise (closeouts or overstocks from manufacturers, for example) and donated goods in a contemporary retail atmosphere. When you shop in a Goodwill store, not only will you have a real shopping adventure, you'll have the satisfaction of helping fund programs and services that help people in your community.

Your Goodwill NCW stores/training centers handled 1,915,181 customer transactions last year. Total sales was \$21,588,746, an increase of 7% over last year. In addition, 20,542 people were provided with emergency clothing and household items in their time of need, valued at \$497,580, through our cooperative referral system, which includes almost 400 local agencies across our 35-county region.

Programs and services



As a not-for-profit organization, Goodwill uses the revenue from our stores to pay our people, and to fund a wide variety of innovative programs and services that help people with disabilities and other barriers to independence become more integrated into the community. Some of these programs create jobs, offer training, or address educational or developmental issues.

More than 20 of our programs are based at the Goodwill Community Center in Menasha. Such programs as ACTION Training for Employment, Early Intervention Services, Financial Information and Service Center (FISC), the American Indian Center, Vocational Support Services and Work Services helped improve the lives of 8,320 individuals in 2004.

In all of our store communities, we also collaborate with community partners, who bring additional resources to the cause. These include local high schools, county offices of emergency government, community corrections employment programs, supportive work programs, Wisconsin Works (W-2) programs, juvenile restitution programs, older adult work experience programs and light duty return-to-work programs.

In addition, the Goodwill Community Center is home to 27 other campus partners -- agencies and services such as Habitat for Humanity, Fox Cities Workforce Development Center, Juvenile Diabetes Research Foundation, Fox Cities Community Health Center and the United Way -- who enjoy cost savings and opportunities for collaboration by co-locating. Most importantly, the campus concept offers better, seamless service to the program participants.

All of these programs and services improve the lives of individuals in our communities, and ultimately, the communities themselves.

Donating to Goodwill

How your donations
help others

What we can and
cannot accept

Guidelines for your income
tax deduction



Goodwill NCW

Serving North Central Wisconsin Communities



When
you
donate
to Goodwill,
you help improve lives!

When you donate the gently used clothing, books, housewares, jewelry, tools, furniture, toys, etc. that you no longer need, wonderful things happen! Your donations support jobs in our stores. Then, when people buy, we use the revenue to support programs and services that help people with disabilities and other barriers to independence. This enriches individual lives and our communities. We call this concept The Goodwill Promise.



Are there items Goodwill cannot accept?

Yes, and the list changes frequently. We must say "no thank you" to some items for one or more of the following reasons:

- Experience tells us it will not sell in our stores (we would eventually have to pay to dispose of it in a landfill);
- It is too heavy or bulky, or too costly, for our people to handle.
- It has been recalled - or listed as potentially harmful - by the Consumer Product Safety Commission.
- It is hazardous material that would create danger in our workplace or be costly to dispose of.

While we make every effort to keep this list up to date, sometimes we must stop taking an item before it actually makes our list. We hope you will understand if a donation attendant informs you that we cannot accept something that has not yet appeared on the list.

Hard goods we are currently unable to accept include:

Appliances Air conditioners/purifiers Dehumidifiers Dishwashers Dryers Freezers Hot water heaters Humidifiers Microwaves Refrigerators Stoves and range hoods Washing machines Water softeners Wood burners	Electronic equipment Computers/printers Copy machines Televisions Exercise and sporting equipment Bowling balls Life preservers Trampolines Weights/weight benches Large furniture items Desks (heavy metal) Head/foot boards Large organs Mattresses/box springs Metal bed springs Pianos Ping pong tables Pool tables Sewing machines	Building materials Carpeting Concrete, bricks and stones Plumbing fixtures Scrap lumber Shutters Swing sets Venetian blinds Windows, screens and doors Fueled equipment Gas space heaters Kerosene stoves/lanterns Lawn mowers Other Bows and arrows Guns/weapons Lava lamps	Sofa beds Water beds Building materials Carpeting Concrete, bricks and stones Plumbing fixtures Scrap lumber Shutters Swing sets Venetian blinds Windows, screens and doors Fueled equipment Gas space heaters Kerosene stoves/lanterns Lawn mowers Other Bows and arrows Guns/weapons Lava lamps
---	--	---	---

These are hazardous liquids and other materials we are currently unable to accept. It is not a complete list; please ask the donation attendant about any item you think is questionable.

Air open household item Adhesives Aerosol spray cans Air fresheners Ammunition Batteries (of any kind) Cleaners Cooking oil Detergents Diabetic testing equipment Fire extinguishers	Fireworks Flammables Herbicides (for plant care) Kerosene Lab chemicals Light bulbs Lighters/matches Medicine/inhalers Mercury/thermometers Mothballs Nail polish/remover	Oven cleaners Oxygen tanks Paints Personal hygiene items Perfume Pesticides Poison Polish of any kind Pool chemicals Primers Propane tanks	Removers Smoke detectors Stains Springs Thinners/turpentine Tires Vehicle fluids (gas, oil, transmission, brake, etc.) Wax products Wood preservatives
---	--	---	---

Please call your local hazardous waste/recycling center or landfill for advice about how to dispose of these materials safely. We thank you for helping Goodwill maintain a safe environment and reduce the expense of disposing of materials we are unable to use.

What kind of income tax deduction can I get for my donations?

If you itemize deductions on your federal income tax return, the Internal Revenue Service allows a "market value" deduction for in-kind donations to qualified charitable organizations. Since Goodwill is a 501(c)(3) non-profit organization, your donations qualify. The attendant at our donation center will provide you with a receipt form, if you wish.

The IRS defines "fair market value" as the price an item would sell for in a thrift store if you actually put a dollar value on your receipt, we are allowed to provide the store prices as a guideline for you.

Average Goodwill store prices	
Women's clothing Tops/slacks/sweaters Denims Jackets/blazers Winter coats	\$3-4.00 5.00 5.00 10.00
Men's clothing Shirts/pants/sweaters Denims Jackets Winter jackets/suits	3-4.00 5.00 5.00 10.00
Infants/toddlers Boys and girls Tops/bottoms Jackets/coats	1-5.00 2-3.00 3-5.00 2-5.00
Small electronics Shoes Children's Men's Women's Boots	3.00 5.00 4.00 3-4.00

If you donate items of exceptional quality or value, check with your attorney or tax advisor for information about donation deductions, see the Goodwill Industries International website at www.gi-international.org or call 1-800-368-7222. Then "Claiming Tax Deductions."

A note about for-profit thrift stores

More and more for-profit thrift shops are moving into north central Wisconsin. To one of these organizations, you are not eligible for a tax deduction, and revenues from sales go to the organization. If either of those concepts is important to you, please contact us at 501(c)(3) non profit, and/or request a report showing how its funds are used before donating.

Other ways to support Goodwill

In addition to donating your used goods, there are other ways you can support the work of Goodwill:

- Shop in our stores.
- Make a cash contribution.
- Include Goodwill (NCW) in your estate planning.
- Volunteer at your local Goodwill store or the Goodwill Community Center.
- Tell people about Goodwill.
- Refer someone to our services.

For more information about any of these opportunities, call the Goodwill office at 800-482-0030 or 920-731-6601, or contact us by e-mail at info@goodwillncw.org

What kind of income tax deduction can I claim?

If you itemize deductions on your federal income tax return, the Internal Revenue Service allows you to deduct the "fair market value" of in-kind donations to qualified charitable organizations. Since Goodwill NCW is a 501(c)(3) not-for-profit human services organization, your donations qualify. The attendant at our donation doors will provide you with a receipt form, if you wish.

The IRS defines "fair market value" as the price an item would sell for in a thrift shop. While Goodwill is prohibited by law from actually putting a dollar value on your receipt, we are allowed to provide the following list of average Goodwill store prices as a guideline for you.

Average Goodwill store prices			
Women's clothing		Infants/toddlers	1-5.00
Tops/slacks/sweaters	\$3-4.00	Boys and girls	
Denims	5.00	Tops/bottoms	2-3.00
Jackets/blazers	5.00	Jackets/coats	3-5.00
Winter coats	10.00	Small electronics	2-5.00
Men's clothing		Shoes	
Shirts/pants/sweaters	3-4.00	Children's	3.00
Denims	5.00	Men's	5.00
Jackets	5.00	Women's	4.00
Winter jackets/suits	10.00	Boots	3-4.00
		Accessories	1-4.00
		Household items	1-7.00
		Furniture	
		Kitchen chairs	3-5.00
		Kitchen table	10-25.00
		Sofa	20-50.00

If you donate items of exceptional quality or value, check with your attorney or tax advisor for advice. For additional information about donation deductions, see the Goodwill Industries International web site at www.goodwill.org; click on "Donate," then "Claiming Tax Deductions."

A note about for-profit thrift shops

More and more for-profit thrift shops are moving into north central Wisconsin communities. If you donate to one of these organizations, you are not eligible for a tax deduction, and revenues earned might not be returned to your community to fund programs and services. If either of those concepts is important to you, ask the shop if it is a 501(c)(3) non profit, and/or request a report showing how its funds are used before you decide where to donate.

Other ways to support Goodwill

In addition to donating your used goods, there are other ways you can support the work of Goodwill NCW.

- You can:
- ◆ Shop in our stores.
 - ◆ Make a cash contribution.
 - ◆ Include Goodwill NCW in your estate planning.
 - ◆ Volunteer at your local Goodwill store or the Goodwill Community Center.
 - ◆ Tell people about Goodwill.
 - ◆ Refer someone to our services.
 - ◆ Bring a group to tour one of our Goodwill stores/training centers or our Community Center in Menasha.
 - ◆ Invite a Goodwill representative to speak to your organization.
 - ◆ Encourage the hiring of Goodwill-trained individuals.

For more information about any of these opportunities, call the Goodwill Community Center at 800-482-0030 or 920-731-6601, or contact us by e-mail at info_gw@gwicc.org.

How do I donate?

Each of our Goodwill NCW stores has an attended drive-up donation door to make it easy for you to donate your merchandise. Someone will help you unload your goods and move them to our receiving area. He or she will give you a receipt for your income tax records, if you wish, and will determine if there are items we are unable to accept.

Because of cost and liability, Goodwill NCW does not provide home pick-up service. In some communities, however, we partner with local volunteers (Boy Scouts, school groups and military reservists, for example) for annual "Sack It" donation drives. If your community participates, you'll find a plastic sack in your newspaper; in some cases, filled bags are picked up curbside on special collection days, or they can be brought to your local Goodwill store.

What does Goodwill accept?

We accept all sorts of clothing and household items that are "gently used." That means they are clean, in working order, not missing parts, etc. - the kinds of items you would pass on to a good friend.



Goodwill Industries of North Central Wisconsin

Goodwill Industries of North Central Wisconsin is one of 207 regional Goodwill organizations throughout North America and across the world. A member of Goodwill Industries International and Rehabilitation For Wisconsin, it has been serving north central Wisconsin communities since 1971.

Goodwill NCW is a 501(c)(3) human services organization and currently serves 35 counties through Goodwill stores/training centers in these communities:

Ashwaubenon	Manitowoc	Rice Lake
East Claire	Marshfield	Shawano
Darboy	Menasha	Stevens Point
Grand Chute	Menomonie	Tomah
Green Bay	Oshkosh	Weston
La Crosse	Rhineland	Wisconsin Rapids

Regular store hours are 9 a.m. to 9 p.m. weekdays, from 9 a.m. to 7 p.m. on Saturdays, and from 10 a.m. to 6 p.m. on Sundays. Call for special holiday hours.



Goodwill Industries of North Central Wisconsin, Inc.
1800 Appleton Road
Menasha, WI 54952
800-482-0030
TDD: 920-731-6623
www.goodwillncw.org

Goodwill NCW is accredited by CARE for Employment Services, Comprehensive Vocational Evaluation, Employee Development Services, Organizational Employment Services, and Community Employment Services.



Donating to Goodwill

How your donations help others

What we can and cannot accept

Guidelines for your income tax deduction



Goodwill NCW
Serving North Central Wisconsin Communities

When you books, hou: toys, etc. th things happ in our store use the reve services that and other b enriches inc We call thi

The **GOOD**

comi and ot

|| ver

The Goodwill

Community Center

Fox Cities/Menasha, Wisconsin



Another
way we keep
The Goodwill Promise



Our Goodwill Promise is this: if you donate to Goodwill and buy in our stores, we'll create programs and services that improve individual lives and improve communities.



One of the ways we have kept our promise across north central Wisconsin is by creating the Goodwill Community Center.

What exactly is the Goodwill Community Center?

It's a **place** - a 16-acre campus in the Fox Cities that is home to almost 50 agencies and services that help people improve their lives. It's also a **concept**: an innovative, collaborative approach to service delivery that helps individuals, nonprofits and our communities.

Created in 1997, the Center is anchored by the Menasha Goodwill store/training center. It also includes offices for more than 20 Goodwill NCW programs and services and welcomes 27 other nonprofits as residents. This past year, more than 100,000 people were served directly or indirectly by campus-based organizations. It's a win for the people we serve, for the agencies themselves and for our communities.

"United Way Fox Cities was the first partner to relocate to the Goodwill Community Center back in 1997. We believed in the concept of sharing 'back room' services and allowing nonprofits to focus on their strength - delivering programs that are helping people in our community."

"The concept has become reality. There are nearly 30 nonprofit agencies sharing expenses and serving more people. United Way, in particular, has been able to grow our office space, access meeting facilities, share high-speed Internet services, and more - all for a lower cost than we would pay individually. We are glad to be a part of this success story!"

Peter Kelly, President/C.E.O., United Way Fox Cities

The Goodwill Community Center - Fox Cities/Menasha, Wisconsin

A win for our "customers"

Often, people with one human services need might have several that can best be met without traveling all over town. For example, a person who is between jobs might come in to use the services of the Workforce Development Center, a state agency that resides on the campus. He or she might also have a medical need that can be addressed at the Fox Cities Community Health Center, or might need some information about community services from Information and Referral at United Way Fox Cities. While there, he or she can also pick up some value-priced clothing or household supplies at the Goodwill retail store.

Easy to access at the intersection of Highways 441 and 47, and a 10-minute ride from downtown Appleton by Valley Transit bus, the Center is emerging as a one-stop source of valuable programs and services.

"Since so many of our clients are served by more than one agency, it is very convenient for both our staff and our clients to be located on the campus together. It makes cross-referrals easier, and helps reduce transportation issues for our very low income clientele."

"As staff, being in the same building gives us the opportunity to get to know people from other agencies who provide services and programs that complement our own, and the environment is always friendly, helpful and surprisingly non-competitive."

Naomi Dvoradick, Director of Development, CAP Services



"The local Epilepsy Foundation office has benefited by being a part of the Campus on several levels. It's a great facility, and has easy access for our clients. The Goodwill staff has been very good to us as well, and we truly appreciate it. Being part of the Goodwill Campus has made it possible for us to start active in the Fox Cities when funding has been very tight."

Cindy Piotrowski, Executive Director
Epilepsy Foundation of Central and Northeast Wisconsin

A win for the agencies

Co-locating - sharing the common facility at the Goodwill Community Center - provides agencies with a number of advantages: reasonable rent, shared services such as security and maintenance, and the opportunity to collaborate with and learn from others in the people-serving business. This results in cost savings and opportunities to more efficiently serve those who need our services.

A win for our communities

When services are efficiently delivered and conveniently available, people are better served. And, when that happens, our communities also win.

"The biggest benefit of being part of the Goodwill Community Center is the high level of comprehensive services we're able to offer our consumers. The taxpayers and financial contributors also benefit, because we're able to reduce facility and staffing duplications and stretch our financial resources further."

Steve Callahan, Employment & Training Supervisor
Fox Cities Workforce Development Center

"A Community Center focused on the well-being of people in our community is exactly the affiliation our organization needs to be a part of. The Goodwill emphasis on community collaboration aligns with each agency's mission, providing the community resources, support and opportunities."

Judie Kreston, Director
Juvenile Diabetes Research Foundation

Who "lives" at the Goodwill Community Center?

There are three types of "residents" on the Community Center campus: a Goodwill NCW store/training center, Goodwill programs and services, and a host of non-Goodwill community agencies and services who reside with us as campus partners.

1. The Goodwill store/training center

The Menasha Goodwill store/training center is one of 18 stores across the 35-county region served by Goodwill NCW. A 22,000-square-foot facility, it offers quality merchandise at moderate prices. It features a mix of donated goods and new merchandise (closets or overstocks from manufacturers, for example) in a contemporary retail atmosphere. All of our stores have a drive-through donation facility to make it easy for people to drop off clothing, household items, furniture, books, toys and other items they no longer need. These items, when sold in our stores, generate revenues that are used to fund the programs and services of Goodwill.

Like our other stores, the Menasha store is also a training center. It takes people to sort donated goods, determine what goes on the sales floor when, price the merchandise, and keep racks and shelves well-stocked. These jobs serve as valuable training opportunities for those with disabilities and other barriers to employment, and put dollars back into the local economy.

2. Goodwill NCW programs and services

Goodwill NCW programs and services directly touched 31,029 lives in 2004, and a good share of that happened on our campus. Most of our 24 programs and services physically reside at the Goodwill Community Center. Two programs, Financial Information & Service Center (FISC) and Vocational Support Services (VSS), are located in a mini-campus facility about a mile from the main campus. Two others form the nucleus of a multicultural mini-campus in downtown Appleton: Harmony Cafe and the American Indian Center of the Fox Valley, which became the first resident member of the Fox Cities Rotary Multicultural Center.

Goodwill NCW programs for families and children

- Beyond Boundaries of Autism (Children First)
- Helping Hands in the Home
- Life Skills Classroom/job Readiness
- Financial Information & Service Center (FISC)



Goodwill NCW programs for employment/vocational training

- Wisconsin Works (W-2) Programs
- Community Service Jobs
- Food Stamp Employment & Training
- Life Skills Classroom
- Job Development Program
- Work Adjustment Training/Work Services
- Vocational Support Services (VSS)

3. Campus partners of The Goodwill Community Center

- CAP Services
- CESA 6/Menasha Alternative School
- Children's Service Society of Wisconsin
- Epilepsy Foundation - Central and Northeast Wisconsin
- Family Services of North East Wisconsin
- Fox Cities Community Health Center
- Fox Cities Workforce Development Center, including:
 - Calumet County Human Services
 - CareerPros, Inc.
 - Career Resource Room
- CCDEI
- Division of Vocational Rehabilitation
- Equal Rights Division
- IN/TC GOAL Lab
- Fox Valley Workforce Development Board
- Experience Works
- Job Service
- Labor Education & Training Center
- Outagamie County Health and Human Services
- Unemployment Insurance
- Fox River Valley Alternative School/CESA 6

Goodwill NCW programs promoting diversity

- American Indian Center of the Fox Valley
- Community Garden Partnership
- Harmony Cafe



- Habitat for Humanity of the Greater Fox Cities Area
- Juvenile Diabetes Research Foundation, Northeast Wisconsin Chapter
- The Leukemia & Lymphoma Society, Northeast Regional Office
- Raebuck Bay's Ranch
- United Way Fox Cities

Others have noticed

Our Goodwill campus concept was honored by two organizations in 2003 for its innovation:

Mutual of America Foundation - Goodwill NCW was one of the top three nonprofit organizations in the country honored by the Mutual of America Foundation with its 2003 Community Partnership Award. This award spotlights community contributions made by nonprofit groups working together with other public and private entities. The Foundation praised our "one-stop human service campus" as "a model for similar organizations in every region of the country."

Association of Fundraising Professionals, Northeast Wisconsin Chapter - Goodwill NCW was recognized by the regional chapter of the Association of Fundraising Professionals as a 2003 Outstanding Philanthropic Corporation, especially for its community center concept. It was applauded for providing "leverage, cooperation and collaboration among the organizations located on the campus," resulting in "more collective energy being directed toward providing high quality services to more individuals and families in need."

Want to know more?

We welcome all comments and questions about the Goodwill Community Center. Better yet, we'd love to have you visit us and see the Center in action. Within the past year, we've had visitors from Iowa, Pennsylvania, New York and Ontario, Canada who wanted to know more.

In addition, we are privileged to host the Goodwill International Delegate Assembly in 2005; we will welcome 400 visitors to the Fox Cities from North America and across the world for this annual gathering of Goodwill executives and board leaders. The focus? The value of human services collaborations and partnerships.

Goodwill Industries of North Central Wisconsin

Goodwill Industries of North Central Wisconsin is one of 207 regional Goodwill organizations throughout North America and across the world. A member of Goodwill Industries International and Rehabilitation For Wisconsin, it has been serving north central Wisconsin communities since 1971.

Goodwill NCW currently serves 35 counties and includes 18 Goodwill stores/training centers from Manitowoc to La Crosse, and as far north as Rice Lake and Rhineland. A 501(c)(3) human services organization, it is based at the Goodwill Community Center in Menasha.

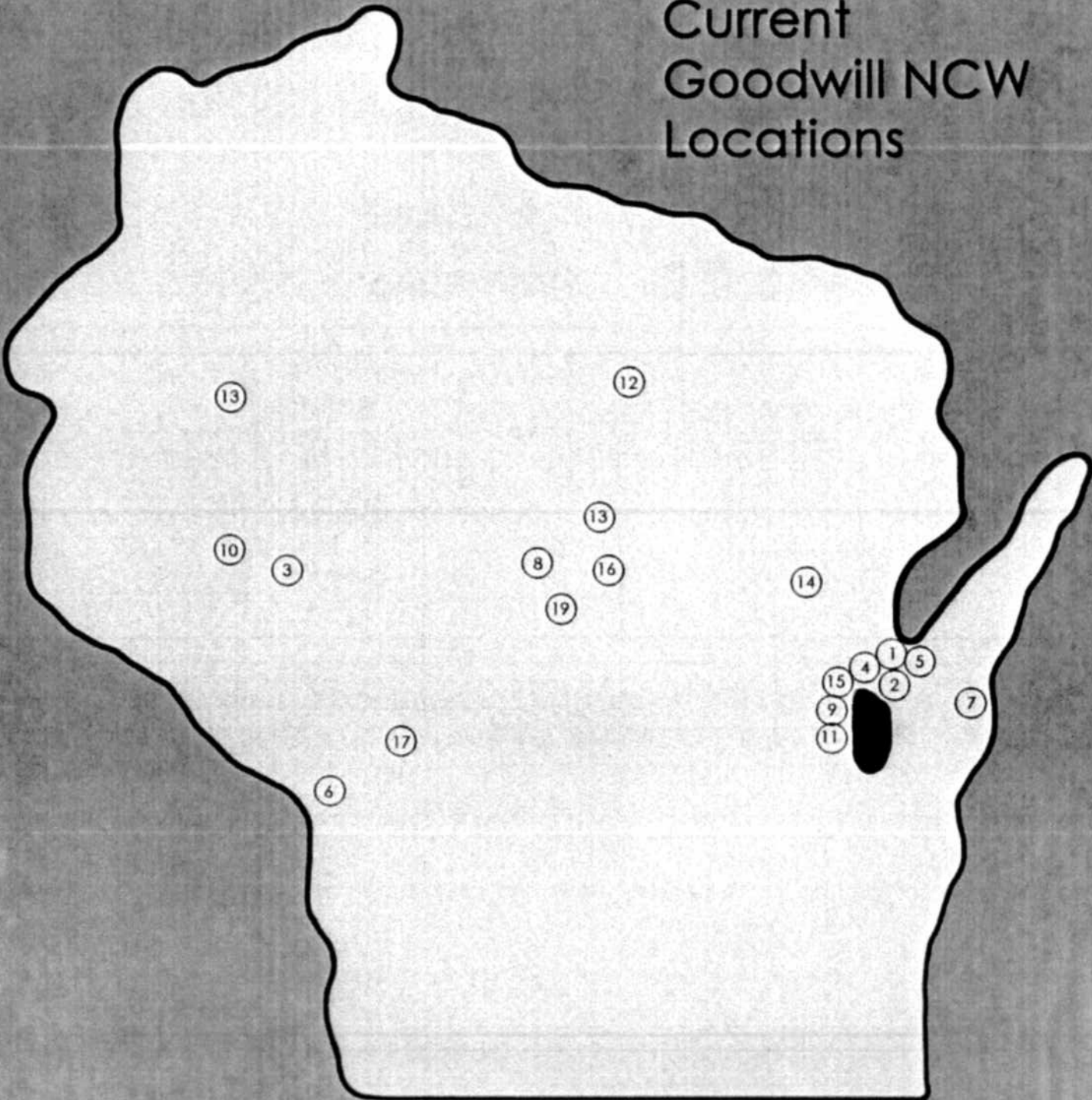


Goodwill Industries of North Central Wisconsin, Inc.
1800 Appleton Road
Menasha, WI 54952
800-482-0030
TDD: 920-731-6623
www.goodwillncw.org

Goodwill NCW is accredited by CARE for Employment Services, Comprehensive Vocational Evaluation, Employee Development Services, Organizational Employment Services, and Community Employment Services.



Current Goodwill NCW Locations



- 1. Ashwaubenon
- 2. Darboy
- 3. Eau Claire
- 4. Grand Chute
- 5. Green Bay East
- 6. La Crosse
- 7. Manitowoc
- 8. Marshfield
- 9. Menasha
- 10. Menomonie
- 11. Oshkosh
- 12. Rhinelander
- 13. Ricelake
- 14. Shawano
- 15. Shiner Center
- 16. Stevens Point
- 17. Tomah
- 18. Weston
- 19. Wisconsin Rapids



**Counties Served
by Goodwill NCW**

Welcome to the Goodwill Community Center!

Door 1

- ◆ Menasha Goodwill Retail Store and Training Center

Door 2

- ◆ Goodwill NCW offices

These Goodwill Programs and Services

- ◆ ACTION Training for Employment
- ◆ Children First
- ◆ Community Development Program
- ◆ Employers' Resource/Job Placement
- ◆ Helping Hands in the Home
- ◆ School-to-Work
- ◆ Transitional Support Program
- ◆ Vocational Evaluation
- ◆ W-2: Community Service Jobs
- ◆ W-2: Food Stamp Employment and Training Program
- ◆ W-2: Life Skills Classroom/Job Readiness
- ◆ W-2: Job Development Program
- ◆ Work Adjustment Training/Work Services

Campus Partners

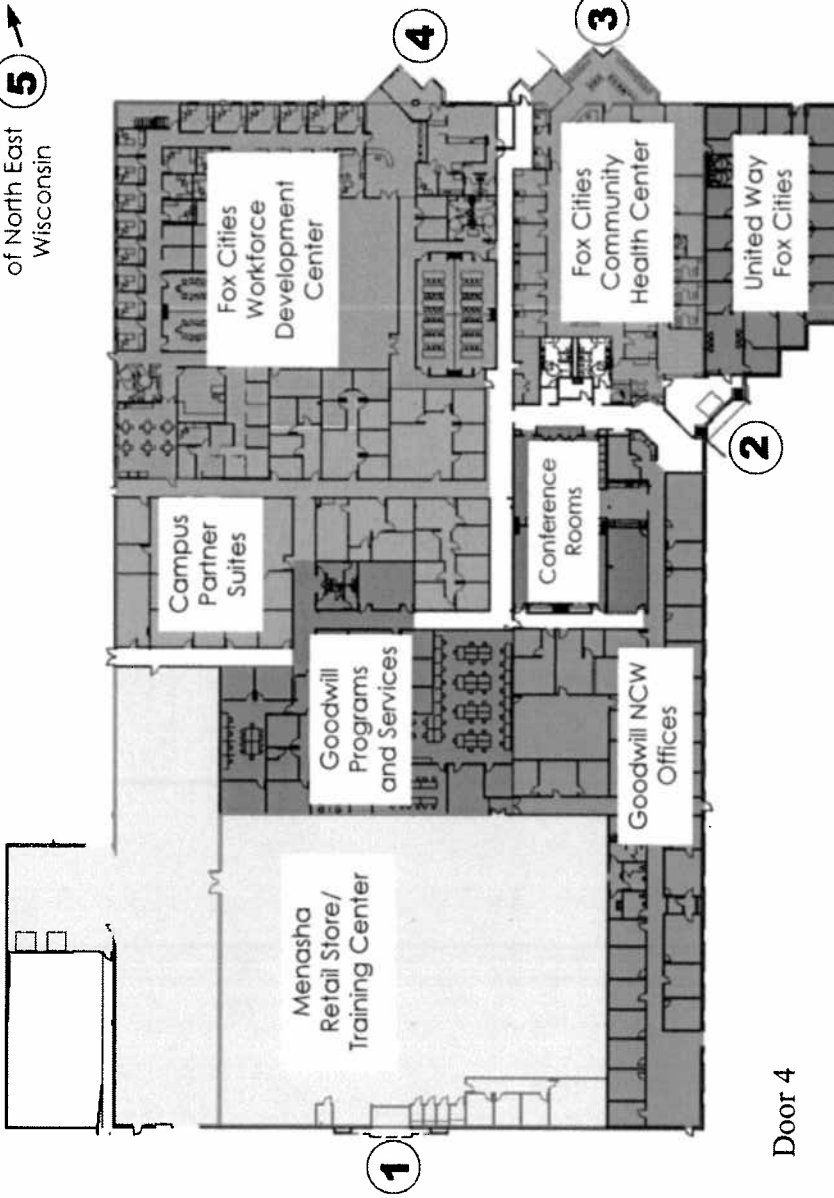
- ◆ CAP Services
- ◆ CESA 6/Menasha Alternative School
- ◆ Children's Service Society of Wisconsin
- ◆ Epilepsy Foundation-Central and Northeast Wisconsin
- ◆ Fox River Valley Alternative School/CESA 6
- ◆ Habitat for Humanity of the Greater Fox Cities Area
- ◆ Juvenile Diabetes Research Foundation, Northeast Wisconsin Chapter
- ◆ The Leukemia & Lymphoma Society, Northeast Regional Office
- ◆ Rawhide Boys' Ranch
- ◆ United Way Fox Cities

Door 3

- ◆ Fox Cities Community Health Center

Community Gardens

Family Services
of North East
Wisconsin



Door 4

- ◆ Fox Cities Workforce Development Center

Programs include:

- ◆ Calumet County Human Services
- ◆ CareerPros, Inc.
- ◆ Career Resource Room
- ◆ CCDET - UW Oshkosh
- ◆ Division of Vocational Rehabilitation
- ◆ Equal Rights Division
- ◆ Fox Valley Technical College GOAL Lab
- ◆ Fox Valley Workforce Development Board
- ◆ Experience Works
- ◆ Job Service
- ◆ Labor Education & Training Center
- ◆ Outagamie County Health and Human Services
- ◆ Unemployment Insurance - Field Auditors and Quality Control

Door 5

- ◆ Family Services of North East Wisconsin

Goodwill®

History of Goodwill Industries

Goodwill Industries International has a proud history that began more than one hundred years ago. In 1902, a young Methodist missionary named Rev. Edgar Helms arrived at Morgan Chapel in the struggling community of Boston's South End. When a ragged group asked him for help getting food and clothing, Helms instead conceived a way to meet more than just their immediate needs. He took a burlap bag and went to Boston's wealthy citizens, asking door-to-door for whatever clothing and household items they could spare.



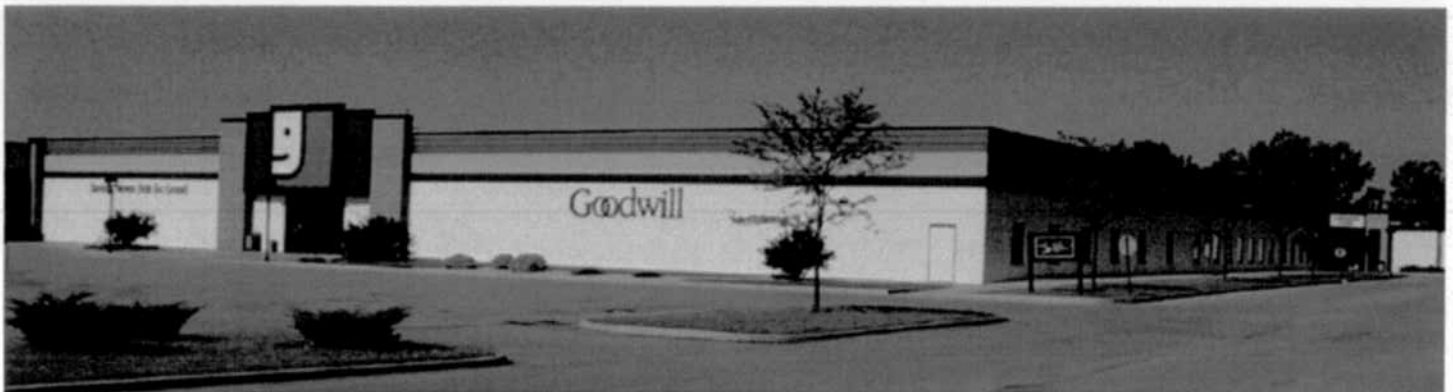
"a hand up – not a handout"

Helms then hired people in need from his parish to repair damaged items and sell the donated clothing and goods again. He used the profits to provide wages to the workers, and the first Goodwill store was born, along with the Goodwill philosophy of "Not Charity, But A Chance."

Helms pioneered an organization that gave people hope, dignity and independence by providing them with the means to earn a paycheck and support their families. His social innovation set in motion a worldwide movement – Goodwill Industries – that would transform more than 5 million lives over the course of a century. Since 1902, Goodwill has evolved into a network of 173 independent, community-based organizations in North America and 24 other organizations around the globe.

Locally, Goodwill Industries of North Central Wisconsin, Inc. has been improving the community by improving the lives of its people for over 30 years. A 501 (c)(3) not-for-profit organization, your Goodwill operates 17 retail stores/training centers and 24 programs and services. Goodwill helps more than 20,000 people each year by providing job training, placement assistance, diversity-related programs and merchandise vouchers through collaborations and partnerships with other local nonprofit organizations.

With your support, just imagine what Goodwill can do in the years ahead.



Above: The Goodwill Community Center is home to more than 20 non-profit agencies, the Menasha Goodwill Retail Store & Training Center and Goodwill Industries of North Central Wisconsin, Inc.

GRAND OPENING!

Join us for our ribbon-cutting
Thursday, June 16 at 9 a.m.
FREE U.S. flags for guests from 9-10 a.m.

**The New Goodwill
Superstore of Darbo**



See Spider-Man®
live and in person!
Saturday, June 18
from 10-2

TM & © 2005 MARVEL

Features of the new Goodwill Superstore & Training Center

At 34,000 square feet, it's one-third larger
than any other Goodwill NCW store

21st century look, feel, and shopping experience

Good  books

Gigantic used/new book department

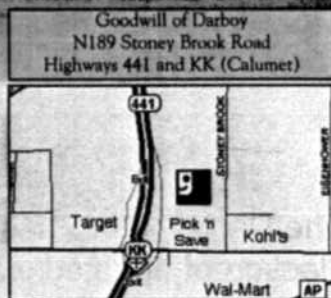
Good Money

Cash. Credit. Convenience.
Powered by Prospera

Goodwill Community Room available
free-of-charge to non-profit organizations

Expanded service to people with disabilities
and other barriers to employment

Now served directly by Valley Transit bus route 9



Good stuff . . . good prices . . . great cause.

Good clothes . . . good prices . . .

Wedding Gowns



The Darboy store has a wonderful collection of donated wedding gowns. Selection varies by the day. *Incredible savings!*



Jewelry

One-of-a-kind jewelry
Selection varies daily



Ladies' Pants

Starting at **\$2.99**



Family Footwear

Kids' sizes starting at **\$2.99**
Adult sizes starting at **\$3.99**

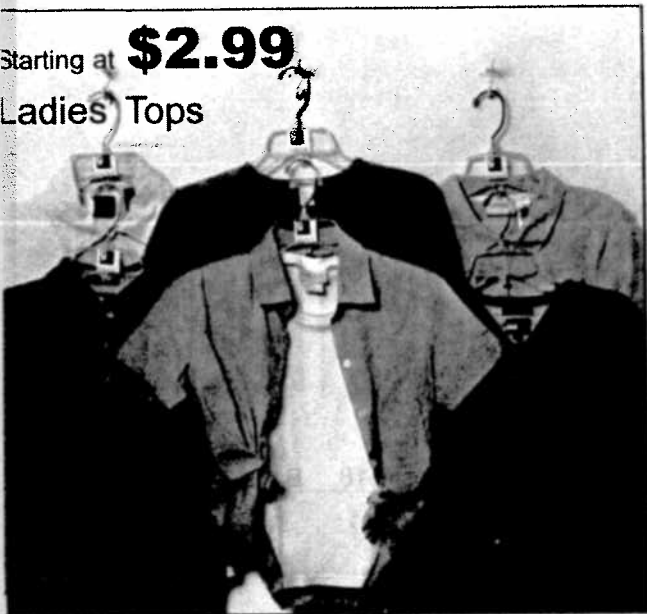


Socks for the entire family

6-Pack Cotton Socks
\$3.99-\$5.99

great cause . . . **GRAND OPENING!**

Starting at **\$2.99**
Ladies' Tops



Starting at **\$2.99**
Many colors,
one-of-a-kind
& unique

T-Shirt
Shop



Starting at **\$2.99**
Ladies' Shorts



Kids' sizes starting at **\$2.99**
Adult sizes starting at **\$4.99**

Denim for
the family

Everyday low prices

Selection varies by store

Gently used merchandise arriving daily

Starting at **\$1.99** Infants' & Toddlers' Clothing

Newborn to 4T



Girls' Clothing Sizes 4-18

Starting at **\$1.99**



Boys' Clothing Sizes 4-20

Starting at **\$1.99**

Men's Short-sleeve Knit Shirts

BRAND NEW
Special Purchase

Starting at
\$4.99



BRAND NEW
Special Purchase



Men's Jackets

\$6.99

Men's Russell® Jackets



Men's Shirts

Starting at **\$2.99**

How Goodwill Works in the Fox Cities



Our promise is a partnership:

When you donate to Goodwill and shop in our stores, together we support programs and services that improve individual lives and our communities.

Here's how you helped us help others in 2004:

- ◆ You brought 101,978 donations to our Menasha and Grand Chute stores/training centers totaling 4,079,120 pounds - that's 2,039 tons!
- ◆ You made 333,315 purchase transactions at our stores!
- ◆ You helped 962 Fox Cities team members and program participants receive paychecks.
- ◆ You helped 10,487 people with a variety of needs receive training, work experience, and other services through Goodwill programs.
- ◆ You helped 2,271 Fox Cities individuals receive emergency clothing and household items in their time of need, valued at over \$54,000.
- ◆ You helped 1,500 needy students in the Fox Cities receive Goodwill back-to-school gift certificates.

Goodwill NCW Programs and Services . . .

Some of the revenue from your donations and purchases in our stores helps support more than 20 programs and services. The numbers in parentheses show how many individuals were helped during 2004.

. . . for families and children

Beyond Boundaries of Autism - in-home therapy to help children with autism maximize their independence and manage their behaviors (89)

Children First - works with non-custodial parents to help increase their monetary and emotional support for their children as they develop (61)

Early Intervention Services (EIS) - intervention services in Winnebago County for families with children from birth to age three who have disabilities or developmental delays (203)

Financial Information & Service Center (FISC) - helps families improve their money management skills through educational workshops, financial/budget/credit counseling, and debt management (4,340)

GED/HSED High School Equivalency Diploma Program - assists at-risk youth and adult learners as they complete their studies for their General Education Development (GED) or Wisconsin's High School Equivalency Diploma (HSED) (173)

Helping Hands in the Home - provides fiscal and human resource support for caregivers of people with disabilities (26)

Wisconsin Families In Action - the state partner organization to implement the Parent Corps, a nationwide initiative to mobilize parents in their local schools to help children and adolescents make healthier choices and to support them in remaining drug free

. . . for employment/vocational training

ACTION Training for Employment - fast-track training for computer, clerical and employability skills (163)

Community Development Program - opportunities in each Goodwill store for individuals with disabilities and other barriers to get hands-on training and work experience (2,167)

Employers' Resource/Job Placement - assists individuals with disabilities in identifying, obtaining and maintaining community employment (72)

School-to-Work - helps students with special needs develop work skills and behaviors through paid work experiences (54)

Transitional Support Program - vocational and employment support to persons with special needs who are approaching readiness for employment in community but are ineligible for funded programs (43)

Vocational Evaluation - assesses individual vocational interests, aptitudes, abilities and needs through various tools and evaluation techniques (62)

Vocational Support Services (VSS) - helps individuals with disabilities find and maintain meaningful employment in the community (139)

Wisconsin Works (W-2) Programs

- Community Service Jobs - work experiences for participants in the W-2 program (85)
- Food Stamp Employment and Training Program - provides instruction and support to help remove barriers to obtaining and maintaining employment (439)
- Life Skills Classroom - provides one-on-one and small group instruction/training for job readiness, job search activities and life skills (135)
- Job Development Program - provides job placement services to help people become self-sufficient through employment (141)

Work Adjustment Training/Work Services - short- and long-term training programs for persons with disabilities that use the Goodwill worksite to develop work skills and behaviors (161)

. . . promoting diversity and community



American Indian Center of the Fox Valley - Formerly known as the Intertribal Community Center, the American Indian Center is a gathering place for off-reservation Native Americans that provides information, education, advocacy and cultural enrichment activities (386)

Community Garden Partnership - rental garden plots to help people feed their families, build community around an enjoyable activity, and contribute to local food pantries and emergency shelters (223)

Harmony Café - a coffee house (124 N. Oneida Street in downtown Appleton) that offers a variety of programs and services and is a safe, peaceful gathering place for people of all ages to celebrate the diversity of people, ideas, and activities (1,174)



For more information about these Goodwill programs and services, go to www.goodwillncw.org

Meet some of the friends and neighbors you've helped



Sherri

The American Indian Center (formerly Intertribal Community Center) and GED/HSED Program have helped Sherri overcome difficulties, work toward her diploma and look forward to continuing her education.



Adam

The Vocational Support Services Program has helped Adam improve his behaviors, develop better relationships with his teammates, and become a contributing team member in the Menasha Goodwill store.



Lana

FISC has helped Lana recover from major debt, learn to manage money and save for the future, and qualify for a home loan to purchase her first home.



Carrie

The GED/HSED Program helped Carrie complete her HSED, become a role model for fellow students, and gain valuable work experience which has led to full-time employment.



Lori

ACTION Training for Employment has helped Lori advance her computer and clerical skills, gain self-confidence, and re-enter the workforce after losing her previous job through downsizing.



Victoria

Comprehensive Vocational Evaluation Services has helped Victoria overcome personal and medical difficulties to land her "dream job" - helping people with disabilities in the workplace learn and do their jobs.



Rudy

Harmony Café helped Rudy complete his community service responsibilities, meet positive role models, become a volunteer and set a goal to find a job through which he can help others.



Melissa

Employers Resource helped Melissa find a full-time position with a local computer company after a near-fatal accident left her without use of her left arm.



Richard

Work Services and Vocational Support Services helped Richard deal with his depression and re-enter the workforce after his previous employer went out of business.



Ella

Early Intervention Services helped Ella's family deal with her rare chromosomal disorder. Weekly therapy and special education services helped prepare her for her local school's early childhood program.

You can read more about these individuals at www.goodwillncw.org

The Goodwill Community Center

What exactly is the Goodwill Community Center? It's a **place** - a 16-acre campus in the Fox Cities that is home to almost 50 agencies and services that help people improve their lives. It's also a **concept**: an innovative, collaborative approach to service delivery that helps individuals, nonprofits and our community.

Created in 1997, the Center is anchored by the Menasha Goodwill store/training center. It also includes offices for Goodwill NCW and most of the Goodwill NCW programs described on the page two, and welcomes some 25 other nonprofit organizations as residents. This past year, more than 100,000 people were served directly or indirectly by campus-based organizations.

It's a win for:

- the people we serve: a one-stop source of valuable programs and services with easy access by car or bus.
- the agencies themselves: reasonable rent, shared services such as security and maintenance, and the opportunity to collaborate with and learn from others in the people-serving business.
- our community: when services are efficiently delivered and conveniently available, people are better served.



These not-for-profit agencies and organizations "live" on the Goodwill Community Center campus:

CAP Services

CESA 6/Menasha Alternative School
Children's Service Society of Wisconsin
Epilepsy Foundation - Central and Northeast Wisconsin
Family Services of North East Wisconsin
Fox Cities Community Health Center
Fox Cities Workforce Development Center, including:

Calumet County Human Services
CareerPros, Inc.
Career Resource Room
CCDET
Division of Vocational Rehabilitation
Equal Rights Division
FVTC GOAL Lab

Fox Valley Workforce Development Board
Experience Works
Job Service
Labor Education & Training Center
Outagamie County Health and Human Services
Unemployment Insurance

Fox River Valley Alternative School/CESA 6
Habitat for Humanity of the Greater Fox Cities Area
Juvenile Diabetes Research Foundation, Northeast Wisconsin Chapter
The Leukemia & Lymphoma Society, Northeast Regional Office
Rawhide Boys' Ranch
United Way Fox Cities

You'll find the Goodwill Community Center at 1800 Appleton Road, Menasha, at the northwest corner of Highways 441 and 47. There are entrances off both Appleton Road and Valley Road.

Goodwill Industries of North Central Wisconsin

Goodwill Industries of North Central Wisconsin is one of 207 regional Goodwill organizations throughout North America and across the world. A member of Goodwill Industries International and Rehabilitation for Wisconsin, it has been serving north central Wisconsin communities since 1971.

Goodwill NCW currently serves 35 counties and includes 18 Goodwill stores/training centers from Manitowoc to La Crosse, and as far north as Rice Lake and Rhinelander. A 501(c)(3) not-for-profit human services organization, it is based at the Goodwill Community Center in Menasha.

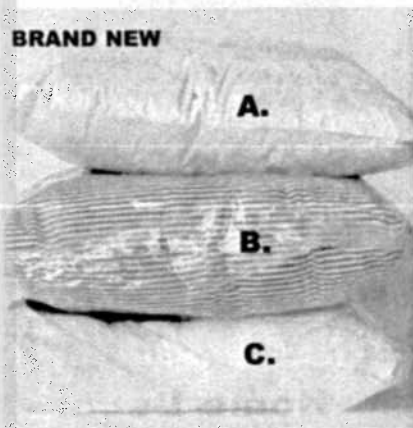
Goodwill NCW is privileged to be the host for this year's Goodwill International Delegate Assembly conference, June 25-28 at the Radisson Paper Valley Hotel. We will welcome nearly 500 visitors to the Fox Cities from North America and across the world for this annual meeting of Goodwill executives and board leaders.

The focus of the conference? The value of human services collaborations and partnerships under the theme "The Collaboration Challenge."

Goodwill Industries of North Central Wisconsin, Inc.
1800 Appleton Road, Menasha, WI 54952
920-731-6601 TDD: 920-731-6623
www.goodwillncw.org

50% off items tagged with the "color of the week"

Many name brands you know



Pillows

Domestics

- A. Feather/Down, \$9.99
- B. Jumbo Size, \$4.99
- C. Regular Size, \$3.99

Selection varies daily

GoodMoney

Cash • Credit • Convenience
Powered by Prospera

A new not-for-profit collaboration between Goodwill NCW and Prospera Credit Union offering:

Short-term loans

- ✓ Loans at reduced fees

Check cashing

- ✓ Payroll and government-issued checks cashed for a small fee

Convenience services

- ✓ Wire transfers
- ✓ Money orders
- ✓ Stamps
- ✓ Bill payment services

Money management information

- ✓ Brochures about the services of FISC, including: money management workshops, counseling, and debt management plans

FISC - the Financial Information & Service Center - is the area's not-for-profit Consumer Credit Counseling Service.

It is located at 921 Midway Road, Menasha.

Stop in and see us today! In the new Goodwill of Darboy, just to the right of the front door.

Equal Opportunity lender. Insured by NCUA. Membership guidelines apply.
The GoodMoney service center is a limited service branch of Prospera Credit Union.



Dear Fox Cities friends,

Please join us for the Grand Opening of the new Goodwill Superstore and Training Center in Darboy! We'll officially cut the ribbon at 9 a.m. on Thursday, June 16, and our celebration will continue through June 26.

Why a new store? For one thing, having a store in the fast-growing Darboy retail area will be more convenient for you, as you shop and bring your gently used goods to our donation door. Most importantly, though, it will provide more space and opportunities for training people with disabilities and other barriers to employment. And, it will generate more income to help support a number of Goodwill programs and services that are so vital to our communities.

People often ask, "What exactly does Goodwill do?" You'll find the answer on the middle four pages of this insert, and on our Web site. You'll also meet some of your friends and neighbors whose lives are improved through our programs and services.



Thanks, Fox Cities, for helping us live out The Goodwill Promise. Our new facility in Darboy will help us serve even better. We invite you to continue to be partners with us in this important work.

Sincerely,

Robert A. Pedersen
President & CEO

John McFadden
Board Chair

Goodwill Industries of North Central Wisconsin, Inc.
1800 Appleton Road
Menasha, WI 54952
920-731-6601 TDD: 920-731-6623
www.goodwillncw.org

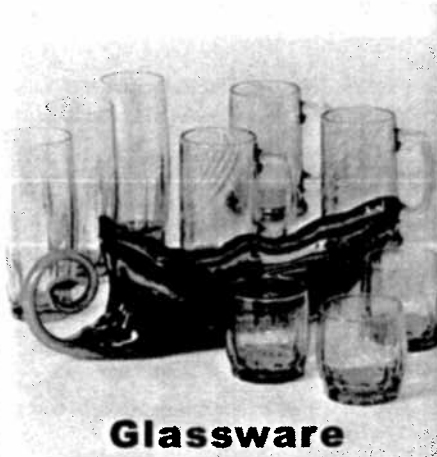
A not-for-profit 501(c)(3) human services organization

Good stuff . . . good prices . . .



Dinnerware

Complete & individual
place settings
Patterns vary daily



Glassware

Sets & individual pieces
Styles vary daily



Home Décor

One-of-a-kind items
arriving daily in our stores

BRAND NEW



Tools for every job

BRAND NEW



Summer Grilling

Large selection of
BBQ utensils,
spices & cookbooks

BRAND NEW



Giftware

Visit our Giftware
Department featuring
brand new gift items

Great cause . . . GRAND OPENING!



Wicker

Choose from baskets & assorted decorative pieces
Starting at **99¢**



Personal Care

Tub mats, brushes & bath accessories
Large selection



Summer Toys

Be ready for fun
Including squirt guns & water toys



Baby Care Products

Just a few of the many items
99¢



Health & Beauty

Just a few of the many items
99¢



Cleaning Supplies

Just a few of the many items
99¢

great cause . . . GRAND OPENING!



Wicker

Choose from baskets & assorted decorative pieces

Starting at **99¢**



BRAND NEW

Personal Care

Tub mats, brushes & bath accessories

Large selection



BRAND NEW

Summer Toys

Be ready for fun

Including squirt guns & water toys



BRAND NEW

Baby Care Products

Just a few of the many items

99¢



BRAND NEW

Health & Beauty

Just a few of the many items

99¢



BRAND NEW

Cleaning Supplies

Just a few of the many items

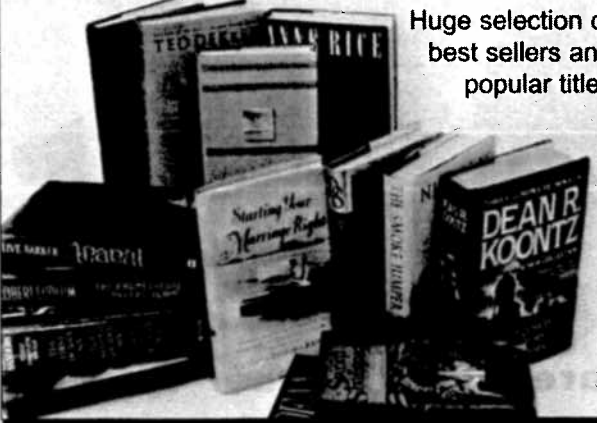
99¢

Goodwill books™

Best Sellers

Starting at **\$2.49**

Huge selection of best sellers and popular titles



A store within a store!

30,000 books

5,000 CDs, DVDs, LPs

Sorted by category and author

New books

Donated books

Hard cover and paperbacks



Children's Books

Starting at **99¢**



CDs, Records & Tapes

Starting at **\$1.49**



Paperback Books

Starting at **99¢**

Large selection of famous authors & best sellers

Goodwill HCW
Serving North Central Wisconsin Communities



Darboy store only

We accept



Your Fox Cities area Goodwill locations:

Goodwill of Menasha
1800 Appleton Road
Highways 441 and 47

Goodwill of Grand Chute
4759 Michaels Drive
(Across from the Fox
River Mall)

Goodwill of Darboy
N189 Stony Brook Road
Highways 441 and KK
(Calumet)

Mon.-Fri. 9-9 Sat. 9-7 Sun. 10-6

Grand Opening Celebration

Thur. June 16
Grand Opening
9-9
Ribbon cutting at 9 a.m.

Fri. June 17
9-9

Sat. June 18
9-7
See Spider-Man in person
10 a.m.-2 p.m.

Sun. June 19
10-6
50% off all items with
purple tags through 6:25

Mon. June 20
9-9

Tue. June 21
9-9
Senior Savings Day (10% discount for age 60 or better)

Wed. June 22
9-9

Thur. June 23
9-9

Fri. June 24
9-9

Sat. June 25
9-7
\$10 gift certificates to 5th
150 customers

7:30 p.m.
The Original Highwaymen
concert for Goodwill-Fox Cities
Performing Arts Center
Appleton

Sun. June 26
10-6
50% off all items with green tags (through 7:2)

All special purchase items are available while supplies last. Effective June 16-26.

*See store for details.

TM & © 2005 **MARVEL**. This advertisement is produced under the MARVEL license.